

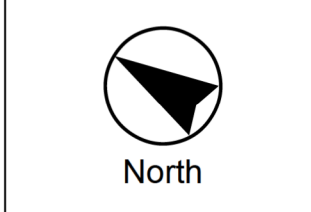
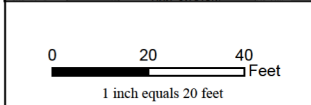
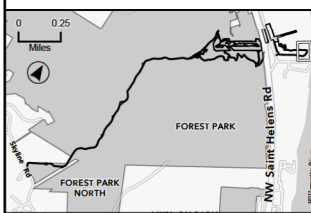


- Legend**
- Limits of Disturbance
 - Surveyed Tree Location
 - Deciduous Tree (Living) to Be Protected
 - Deciduous Tree (Dead) to Be Protected
 - Deciduous Tree (Living) to Be Removed
 - Deciduous Tree (Dead) to Be Removed
 - Conifer (Living) to Be Protected
 - Conifer (Dead) to Be Protected
 - Conifer (Living) to Be Removed
 - Conifer (Dead) to Be Removed
 - Root Protection Zone
 - Existing Access Road Centerline
 - Proposed Temporary Access Road
 - Proposed Temporary Logging Haul Route
 - Proposed Temporary Circulation Route
 - Edge of Roadway/Access Road (approximate)
 - Trail
 - Cut Area
 - Fill Area
 - Wetland/Ordinary High Water (OHW)
 - Greenway Setback (50-ft)
 - Drainage Reserve Area
 - Drainage Flow Arrow
 - Culvert
 - 100-year Floodplain
 - Multnomah County Tax Lot
 - Zoning (City of Portland)
 - Environmental Transition Zone
 - Forest Park Boundary
 - Powerline Easement
 - Contour (5-foot intervals, vertical datum NAVD88)

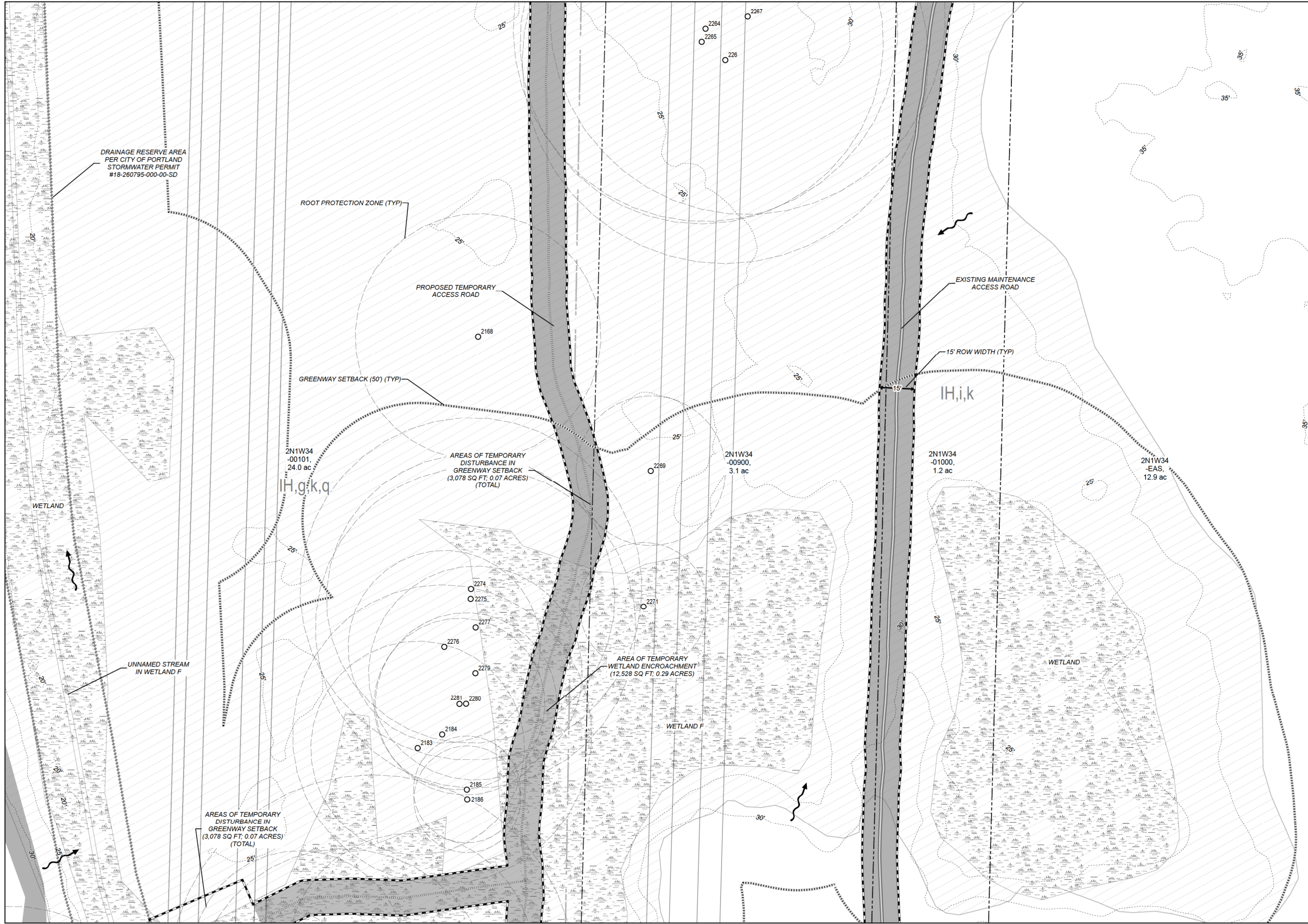
- Zoning (City of Portland):**
- RF = Farm and Forest
 - IH = Heavy Industrial
 - OS = Open Space
 - c = Environmental Conservation
 - d = Design
 - g = River General
 - i = River Industrial
 - k = Prime Industrial
 - p = Environmental Protection
 - q = Water Quality Resource Area
 - s = Scenic Resource

- Area of Temporary Wetland Encroachment:**
Wetland F (Harborton S/S): 12,528 sq ft; 0.29 ac
- Area of Temporary Disturbance in Greenway Setback:**
3,078 sq ft; 0.07 ac
- Area of Permanent Wetland Encroachment:**
Wetland A (Forest Park): 1,074 sq ft; 0.02 ac
Wetland B (Forest Park): 1,854 sq ft; 0.04 ac

- NOTES:**
1. Root protection zones for single-stem trees are calculated by DBH x 1-ft. Therefore, a 6-in DBH tree has a root protection zone of 6-ft in diameter. For multi-stemmed trees, see Mitigation Site Plan Details II, SHT. L325. Root protection zones are not shown for trees to be removed or dead trees.
 2. Vine Maples and all trees with a DBH less than 6-in are not shown on these plans.
 3. South of the Harborton Substation, only trees with RPZs which overlap with the Limits of Disturbance are shown on these plans; all surveyed trees are included in the Project Site area.
 4. See Construction Management Plan set for tree protection fencing.
 5. Tax lots which intersect the Limits of Disturbance are labeled with the Tax Lot ID # and acreage.



MATCHLINE SEE SHEET L102

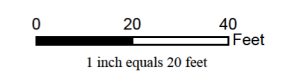
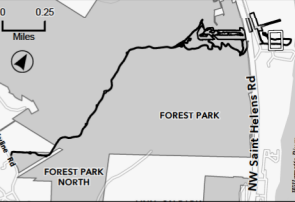


- Legend**
- Limits of Disturbance
 - Surveyed Tree Location
 - Deciduous Tree (Living) to Be Protected
 - Deciduous Tree (Dead) to Be Protected
 - Deciduous Tree (Living) to Be Removed
 - Deciduous Tree (Dead) to Be Removed
 - Conifer (Living) to Be Protected
 - Conifer (Dead) to Be Protected
 - Conifer (Living) to Be Removed
 - Conifer (Dead) to Be Removed
 - Root Protection Zone
 - Existing Access Road Centerline
 - Proposed Temporary Access Road
 - Proposed Temporary Logging Haul Route
 - Proposed Temporary Circulation Route
 - Edge of Roadway/Access Road (approximate)
 - Trail
 - Cut Area
 - Fill Area
 - Wetland/Ordinary High Water (OHW)
 - Greenway Setback (50-ft)
 - Drainage Reserve Area
 - Drainage Flow Arrow
 - Culvert
 - 100-year Floodplain
 - Multnomah County Tax Lot
 - Zoning (City of Portland)
 - Environmental Transition Zone
 - Forest Park Boundary
 - Powerline Easement
 - Contour (5-foot intervals, vertical datum NAVD88)

- Zoning (City of Portland):**
- RF = Farm and Forest
 - IH = Heavy Industrial
 - OS = Open Space
 - c = Environmental Conservation
 - d = Design
 - g = River General
 - i = River Industrial
 - k = Prime Industrial
 - p = Environmental Protection
 - q = Water Quality Resource Area
 - s = Scenic Resource

- Area of Temporary Wetland Encroachment:**
Wetland F (Harborton S/S): 12,528 sq ft; 0.29 ac
- Area of Temporary Disturbance in Greenway Setback:**
3,078 sq ft; 0.07 ac
- Area of Permanent Wetland Encroachment:**
Wetland A (Forest Park): 1,074 sq ft; 0.02 ac
Wetland B (Forest Park): 1,854 sq ft; 0.04 ac

- NOTES:**
1. Root protection zones for single-stem trees are calculated by DBH x 1-ft. Therefore, a 6-in DBH tree has a root protection zone of 6-ft in diameter. For multi-stemmed trees, see Mitigation Site Plan Details II, SHT. L325. Root protection zones are not shown for trees to be removed or dead trees.
 2. Vine Maples and all trees with a DBH less than 6-in are not shown on these plans.
 3. South of the Harborton Substation, only trees with RPZs which overlap with the Limits of Disturbance are shown on these plans; all surveyed trees are included in the Project Site area.
 4. See Construction Management Plan set for tree protection fencing.
 5. Tax lots which intersect the Limits of Disturbance are labeled with the Tax Lot ID # and acreage.



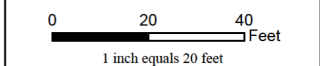
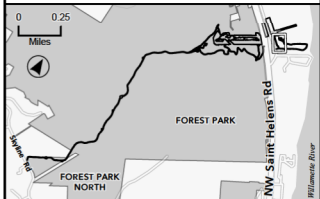
- Legend**
- Limits of Disturbance**
- Surveyed Tree Location**
- Deciduous Tree (Living) to Be Protected
 - Deciduous Tree (Dead) to Be Protected
 - ⊗ Deciduous Tree (Living) to Be Removed
 - ⊗ Deciduous Tree (Dead) to Be Removed
 - △ Conifer (Living) to Be Protected
 - △ Conifer (Dead) to Be Protected
 - ▲ Conifer (Living) to Be Removed
 - ▲ Conifer (Dead) to Be Removed
 - Root Protection Zone
- Other Features:**
- Existing Access Road Centerline
 - Proposed Temporary Access Road
 - Proposed Temporary Logging Haul Route
 - Proposed Temporary Circulation Route
 - Edge of Roadway/Access Road (approximate)
 - Trail
 - Cut Area
 - Fill Area
 - Wetland/Ordinary High Water (OHW)
 - Greenway Setback (50-ft)
 - Drainage Reserve Area
 - Drainage Flow Arrow
 - Culvert
 - 100-year Floodplain
 - Multnomah County Tax Lot
 - Zoning (City of Portland)
 - Environmental Transition Zone
 - Forest Park Boundary
 - Powerline Easement
 - Contour (5-foot intervals, vertical datum NAVD88)
- Zoning (City of Portland):**
- RF = Farm and Forest
 - IH = Heavy Industrial
 - OS = Open Space
 - c = Environmental Conservation
 - d = Design
 - g = River General
 - i = River Industrial
 - k = Prime Industrial
 - p = Environmental Protection
 - q = Water Quality Resource Area
 - s = Scenic Resource

Area of Temporary Wetland Encroachment:
Wetland F (Harborton S/S): 12,528 sq ft; 0.29 ac

Area of Temporary Disturbance in Greenway Setback:
3,078 sq ft; 0.07 ac

Area of Permanent Wetland Encroachment:
Wetland A (Forest Park): 1,074 sq ft; 0.02 ac
Wetland B (Forest Park): 1,854 sq ft; 0.04 ac

- NOTES:**
1. Root protection zones for single-stem trees are calculated by DBH x 1-ft. Therefore, a 6-in DBH tree has a root protection zone of 6-ft in diameter. For multi-stemmed trees, see Mitigation Site Plan Details II, SHT. L325. Root protection zones are not shown for trees to be removed or dead trees.
 2. Vine Maples and all trees with a DBH less than 6-in are not shown on these plans.
 3. South of the Harborton Substation, only trees with RPZs which overlap with the Limits of Disturbance are shown on these plans; all surveyed trees are included in the Project Site area.
 4. See Construction Management Plan set for tree protection fencing.
 5. Tax lots which intersect the Limits of Disturbance are labeled with the Tax Lot ID # and acreage.



MATCHLINE SEE SHEET L102

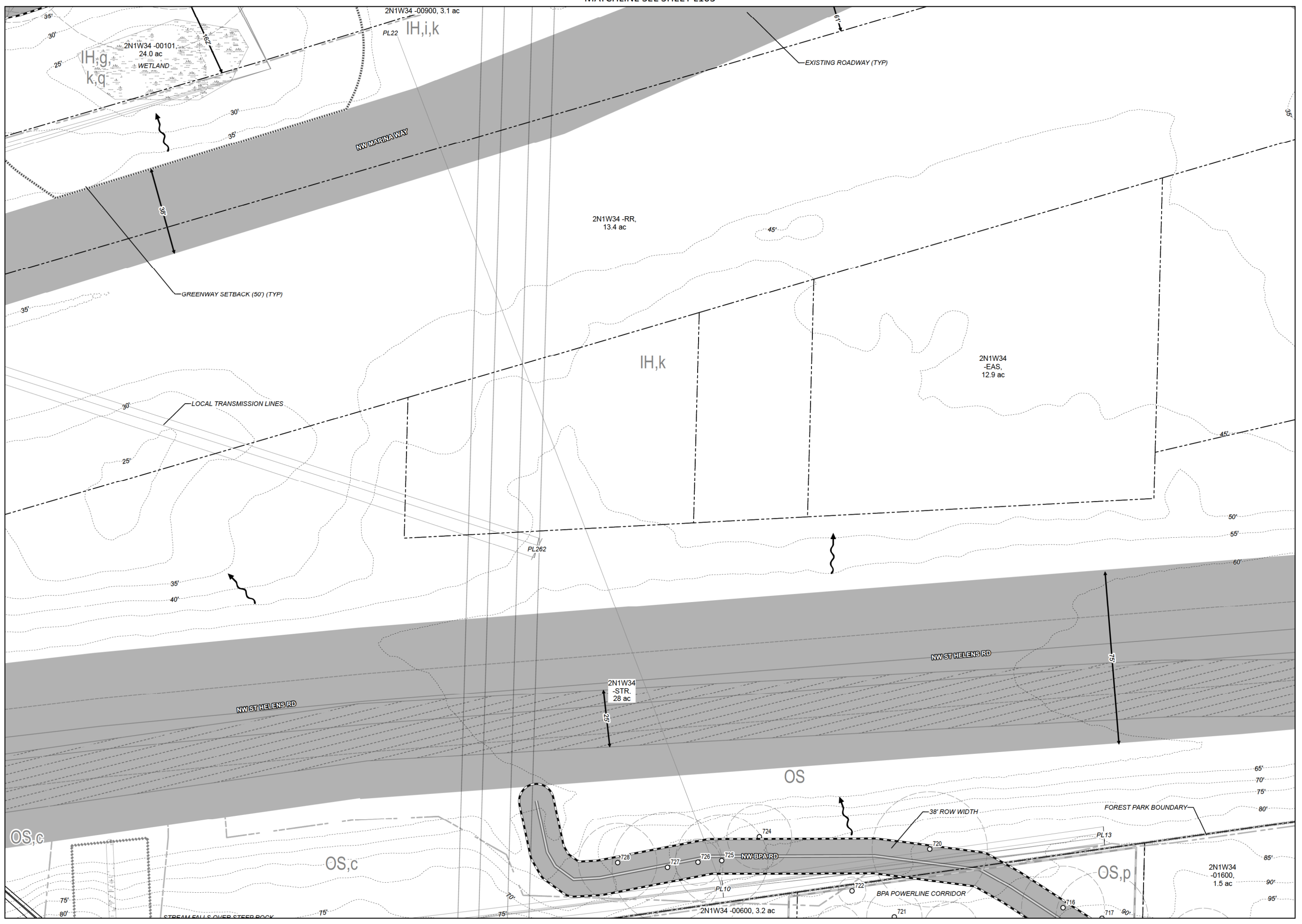
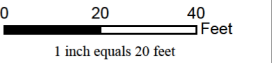
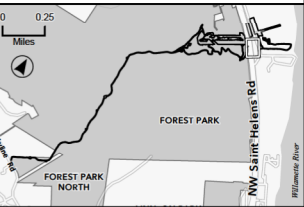
MATCHLINE SEE SHEET L104



- Legend**
- Limits of Disturbance
 - Surveyed Tree Location
 - Deciduous Tree (Living) to Be Protected
 - Deciduous Tree (Dead) to Be Protected
 - Deciduous Tree (Living) to Be Removed
 - Deciduous Tree (Dead) to Be Removed
 - Conifer (Living) to Be Protected
 - Conifer (Dead) to Be Protected
 - Conifer (Living) to Be Removed
 - Conifer (Dead) to Be Removed
 - Root Protection Zone
 - Existing Access Road Centerline
 - Proposed Temporary Access Road
 - Proposed Temporary Logging Haul Route
 - Proposed Temporary Circulation Route
 - Edge of Roadway/Access Road (approximate)
 - Trail
 - Cut Area
 - Fill Area
 - Wetland/Ordinary High Water (OHW)
 - Greenway Setback (50-ft)
 - Drainage Reserve Area
 - Drainage Flow Arrow
 - Culvert
 - 100-year Floodplain
 - Multnomah County Tax Lot
 - Zoning (City of Portland)
 - Environmental Transition Zone
 - Forest Park Boundary
 - Powerline Easement
 - Contour (5-foot intervals, vertical datum NAVD88)
- Zoning (City of Portland):**
- RF = Farm and Forest
 - IH = Heavy Industrial
 - OS = Open Space
 - c = Environmental Conservation
 - d = Design
 - g = River General
 - i = River Industrial
 - k = Prime Industrial
 - p = Environmental Protection
 - q = Water Quality Resource Area
 - s = Scenic Resource

Area of Temporary Wetland Encroachment:
Wetland F (Harborton S/S): 12,528 sq ft; 0.29 ac
Area of Temporary Disturbance in Greenway Setback:
3,078 sq ft; 0.07 ac
Area of Permanent Wetland Encroachment:
Wetland A (Forest Park): 1,074 sq ft; 0.02 ac
Wetland B (Forest Park): 1,854 sq ft; 0.04 ac

- NOTES:**
1. Root protection zones for single-stem trees are calculated by DBH x 1-ft. Therefore, a 6-in DBH tree has a root protection zone of 6-ft in diameter. For multi-stemmed trees, see Mitigation Site Plan Details II, SHT. L325. Root protection zones are not shown for trees to be removed or dead trees.
 2. Vine Maples and all trees with a DBH less than 6-in are not shown on these plans.
 3. South of the Harborton Substation, only trees with RPZs which overlap with the Limits of Disturbance are shown on these plans; all surveyed trees are included in the Project Site area.
 4. See Construction Management Plan set for tree protection fencing.
 5. Tax lots which intersect the Limits of Disturbance are labeled with the Tax Lot ID # and acreage.



MATCHLINE SEE SHEET L105



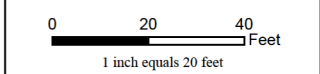
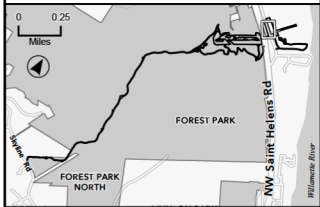
- Legend**
- Limits of Disturbance
 - Surveyed Tree Location
 - Deciduous Tree (Living) to Be Protected
 - Deciduous Tree (Dead) to Be Protected
 - Deciduous Tree (Living) to Be Removed
 - Deciduous Tree (Dead) to Be Removed
 - Conifer (Living) to Be Protected
 - Conifer (Dead) to Be Protected
 - Conifer (Living) to Be Removed
 - Conifer (Dead) to Be Removed
 - Root Protection Zone
 - Existing Access Road Centerline
 - Proposed Temporary Access Road
 - Proposed Temporary Logging Haul Route
 - Proposed Temporary Circulation Route
 - Edge of Roadway/Access Road (approximate)
 - Trail
 - Cut Area
 - Fill Area
 - Wetland/Ordinary High Water (OHW)
 - Greenway Setback (50-ft)
 - Drainage Reserve Area
 - Drainage Flow Arrow
 - Culvert
 - 100-year Floodplain
 - Multnomah County Tax Lot
 - Zoning (City of Portland)
 - Environmental Transition Zone
 - Forest Park Boundary
 - Powerline Easement
 - Contour (5-foot intervals, vertical datum NAVD88)
- Zoning (City of Portland):**
- RF = Farm and Forest
 - IH = Heavy Industrial
 - OS = Open Space
 - c = Environmental Conservation
 - d = Design
 - g = River General
 - i = River Industrial
 - k = Prime Industrial
 - p = Environmental Protection
 - q = Water Quality Resource Area
 - s = Scenic Resource

Area of Temporary Wetland Encroachment:
Wetland F (Harborton S/S): 12,528 sq ft; 0.29 ac

Area of Temporary Disturbance in Greenway Setback:
3,078 sq ft; 0.07 ac

Area of Permanent Wetland Encroachment:
Wetland A (Forest Park): 1,074 sq ft; 0.02 ac
Wetland B (Forest Park): 1,854 sq ft; 0.04 ac

- NOTES:**
1. Root protection zones for single-stem trees are calculated by DBH x 1-ft. Therefore, a 6-in DBH tree has a root protection zone of 6-ft in diameter. For multi-stemmed trees, see Mitigation Site Plan Details II, SHT. L325. Root protection zones are not shown for trees to be removed or dead trees.
 2. Vine Maples and all trees with a DBH less than 6-in are not shown on these plans.
 3. South of the Harborton Substation, only trees with RPZs which overlap with the Limits of Disturbance are shown on these plans; all surveyed trees are included in the Project Site area.
 4. See Construction Management Plan set for tree protection fencing.
 5. Tax lots which intersect the Limits of Disturbance are labeled with the Tax Lot ID # and acreage.



MATCHLINE SEE SHEET L104

MATCHLINE SEE SHEET L107

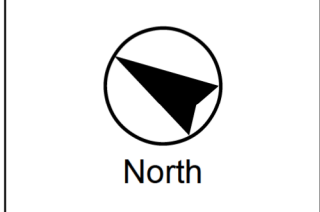
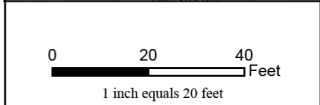
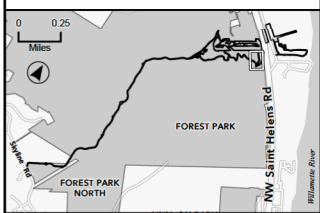


- Legend**
- Limits of Disturbance
 - Surveyed Tree Location**
 - Deciduous Tree (Living) to Be Protected
 - Deciduous Tree (Dead) to Be Protected
 - Deciduous Tree (Living) to Be Removed
 - Deciduous Tree (Dead) to Be Removed
 - Conifer (Living) to Be Protected
 - Conifer (Dead) to Be Protected
 - Conifer (Living) to Be Removed
 - Conifer (Dead) to Be Removed
 - Root Protection Zone
 - Existing Access Road Centerline
 - Proposed Temporary Access Road
 - Proposed Temporary Logging Haul Route
 - Proposed Temporary Circulation Route
 - Edge of Roadway/Access Road (approximate)
 - Trail
 - Cut Area
 - Fill Area
 - Wetland/Ordinary High Water (OHW)
 - Drainage Reserve Area
 - Drainage Flow Arrow
 - Culvert
 - 100-year Floodplain
 - Multnomah County Tax Lot
 - Zoning (City of Portland)
 - Environmental Transition Zone
 - Forest Park Boundary
 - Powerline Easement
 - Contour (5-foot intervals, vertical datum NAVD88)

- Zoning (City of Portland):**
- RF = Farm and Forest
 - IH = Heavy Industrial
 - OS = Open Space
 - c = Environmental Conservation
 - d = Design
 - g = River General
 - i = River Industrial
 - k = Prime Industrial
 - p = Environmental Protection
 - q = Water Quality Resource Area
 - s = Scenic Resource

- Area of Temporary Wetland Encroachment:**
Wetland F (Harborton S/S): 12,528 sq ft; 0.29 ac
Area of Temporary Disturbance in Greenway Setback:
3,078 sq ft; 0.07 ac
Area of Permanent Wetland Encroachment:
Wetland A (Forest Park): 1,074 sq ft; 0.02 ac
Wetland B (Forest Park): 1,854 sq ft; 0.04 ac

- NOTES:**
1. Root protection zones for single-stem trees are calculated by DBH x 1-ft. Therefore, a 6-in DBH tree has a root protection zone of 6-ft in diameter. For multi-stemmed trees, see Mitigation Site Plan Details II, SHT. L325. Root protection zones are not shown for trees to be removed or dead trees.
 2. Vine Maples and all trees with a DBH less than 6-in are not shown on these plans.
 3. South of the Harborton Substation, only trees with RPZs which overlap with the Limits of Disturbance are shown on these plans; all surveyed trees are included in the Project Site area.
 4. See Construction Management Plan set for tree protection fencing.
 5. Tax lots which intersect the Limits of Disturbance are labeled with the Tax Lot ID # and acreage.





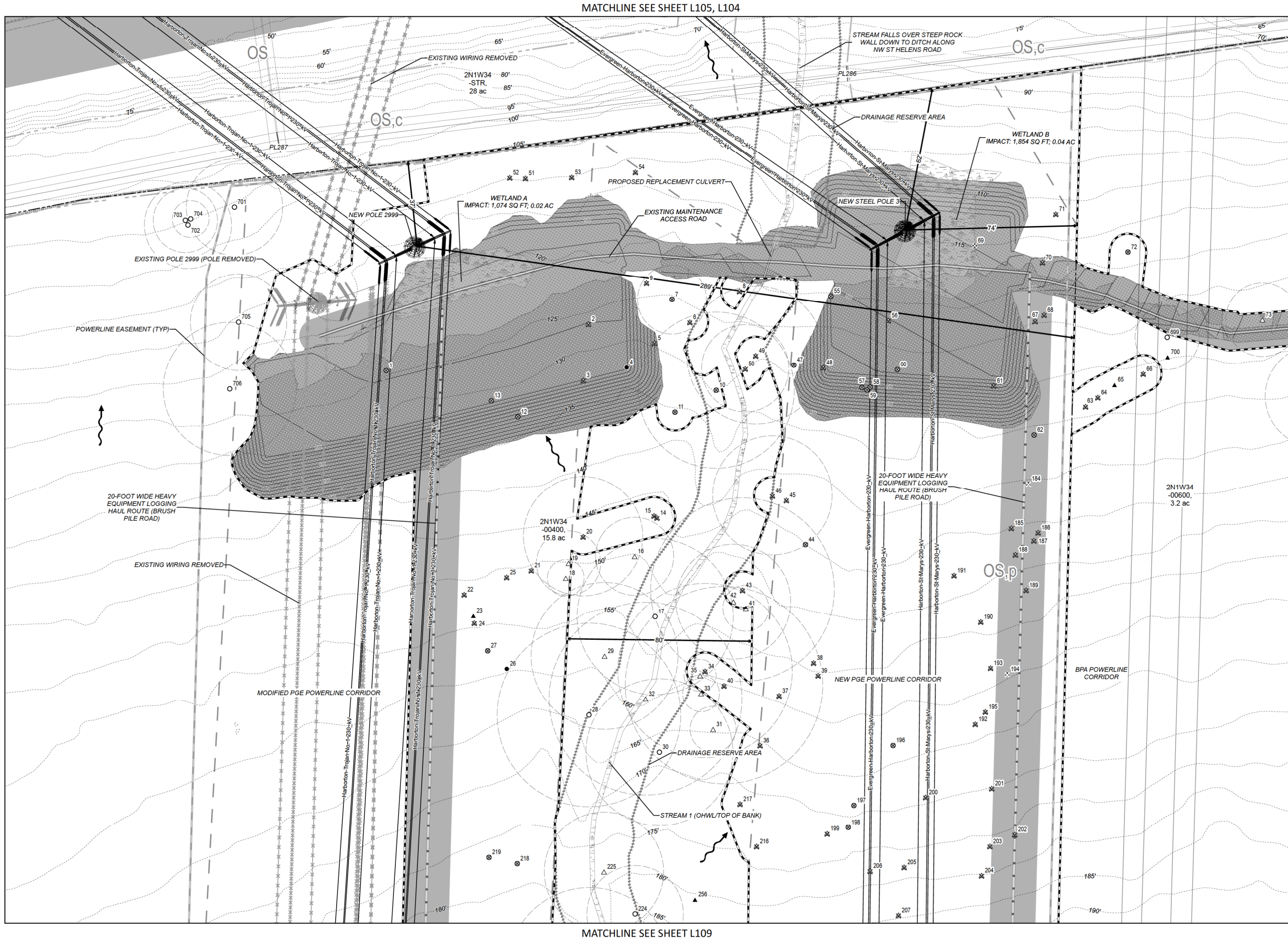
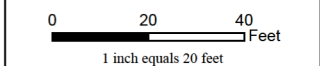
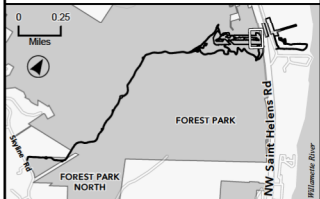
Legend

- Limits of Disturbance
- Surveyed Tree Location
 - Deciduous Tree (Living) to Be Protected
 - Deciduous Tree (Dead) to Be Protected
 - Deciduous Tree (Living) to Be Removed
 - Deciduous Tree (Dead) to Be Removed
 - Conifer (Living) to Be Protected
 - Conifer (Dead) to Be Protected
 - Conifer (Living) to Be Removed
 - Conifer (Dead) to Be Removed
 - Root Protection Zone
- Existing Access Road Centerline
- Proposed Temporary Access Road
- Proposed Temporary Logging Haul Route
- Proposed Temporary Circulation Route
- Edge of Roadway/Access Road (approximate)
- Trail
- Cut Area
- Fill Area
- Wetland/Ordinary High Water (OHW)
- Drainage Reserve Area
- Drainage Flow Arrow
- Culvert
- 100-year Floodplain
- Multnomah County Tax Lot
- Zoning (City of Portland)
- Environmental Transition Zone
- Forest Park Boundary
- Powerline Easement
- Contour (5-foot intervals, vertical datum NAVD88)

- Zoning (City of Portland):**
- RF = Farm and Forest
 - IH = Heavy Industrial
 - OS = Open Space
 - c = Environmental Conservation
 - d = Design
 - g = River General
 - i = River Industrial
 - k = Prime Industrial
 - p = Environmental Protection
 - q = Water Quality Resource Area
 - s = Scenic Resource

- Area of Temporary Wetland Encroachment:**
Wetland F (Harborton S/S): 12,528 sq ft; 0.29 ac
Area of Temporary Disturbance in Greenway Setback:
3,078 sq ft; 0.07 ac
Area of Permanent Wetland Encroachment:
Wetland A (Forest Park): 1,074 sq ft; 0.02 ac
Wetland B (Forest Park): 1,854 sq ft; 0.04 ac

- NOTES:**
1. Root protection zones for single-stem trees are calculated by DBH x 1-ft. Therefore, a 6-in DBH tree has a root protection zone of 6-ft in diameter. For multi-stemmed trees, see Mitigation Site Plan Details II, SHT. L325. Root protection zones are not shown for trees to be removed or dead trees.
 2. Vine Maples and all trees with a DBH less than 6-in are not shown on these plans.
 3. South of the Harborton Substation, only trees with RPZs which overlap with the Limits of Disturbance are shown on these plans; all surveyed trees are included in the Project Site area.
 4. See Construction Management Plan set for tree protection fencing.
 5. Tax lots which intersect the Limits of Disturbance are labeled with the Tax Lot ID # and acreage.



MATCHLINE SEE SHEET L105, L104

MATCHLINE SEE SHEET L109

MATCHLINE SEE SHEET L106



Legend

- Limits of Disturbance
- Surveyed Tree Location**
- Deciduous Tree (Living) to Be Protected
- Deciduous Tree (Dead) to Be Protected
- Deciduous Tree (Living) to Be Removed
- Deciduous Tree (Dead) to Be Removed
- Conifer (Living) to Be Protected
- Conifer (Dead) to Be Protected
- Conifer (Living) to Be Removed
- Conifer (Dead) to Be Removed
- Root Protection Zone
- Existing Access Road Centerline
- Proposed Temporary Access Road
- Proposed Temporary Logging Haul Route
- Proposed Temporary Circulation Route
- Edge of Roadway/Access Road (approximate)
- Trail
- Cut Area
- Fill Area
- Wetland/Ordinary High Water (OHW)
- Drainage Reserve Area
- Drainage Flow Arrow
- Culvert
- 100-year Floodplain
- Multnomah County Tax Lot
- Zoning (City of Portland)
- Environmental Transition Zone
- Forest Park Boundary
- Powerline Easement
- Contour (5-foot intervals, vertical datum NAVD88)

Zoning (City of Portland):

- RF = Farm and Forest
- IH = Heavy Industrial
- OS = Open Space
- c = Environmental Conservation
- d = Design
- g = River General
- i = River Industrial
- k = Prime Industrial
- p = Environmental Protection
- q = Water Quality Resource Area
- s = Scenic Resource

Area of Temporary Wetland Encroachment:

Wetland F (Harborton S/S): 12,528 sq ft; 0.29 ac

Area of Temporary Disturbance in Greenway Setback:

3,078 sq ft; 0.07 ac

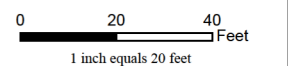
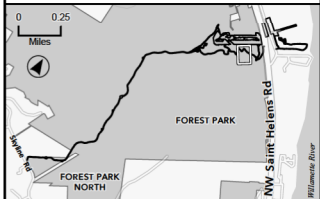
Area of Permanent Wetland Encroachment:

Wetland A (Forest Park): 1,074 sq ft; 0.02 ac

Wetland B (Forest Park): 1,854 sq ft; 0.04 ac

NOTES:

1. Root protection zones for single-stem trees are calculated by DBH x 1-ft. Therefore, a 6-in DBH tree has a root protection zone of 6-ft in diameter. For multi-stemmed trees, see Mitigation Site Plan Details II, SHT. L325. Root protection zones are not shown for trees to be removed or dead trees.
2. Vine Maples and all trees with a DBH less than 6-in are not shown on these plans.
3. South of the Harborton Substation, only trees with RPZs which overlap with the Limits of Disturbance are shown on these plans; all surveyed trees are included in the Project Site area.
4. See Construction Management Plan set for tree protection fencing.
5. Tax lots which intersect the Limits of Disturbance are labeled with the Tax Lot ID # and acreage.



MATCHLINE SEE SHEET L109

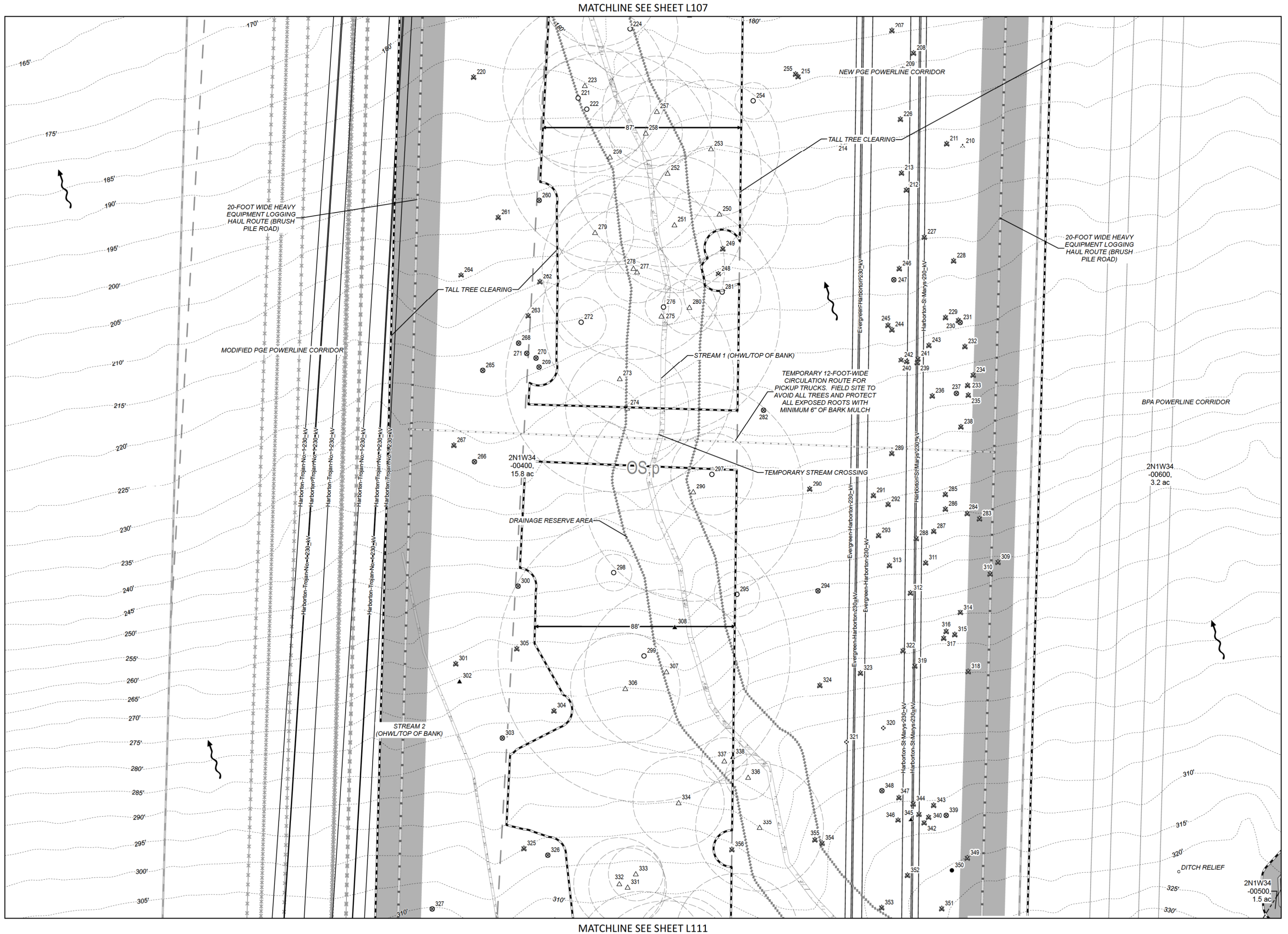
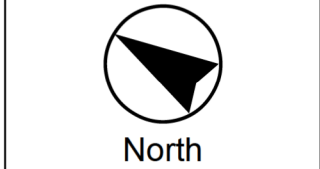
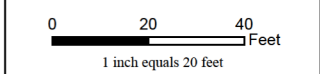
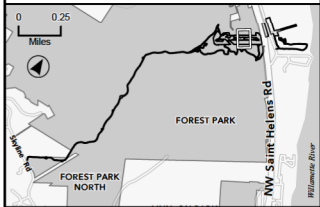
MATCHLINE SEE SHEET L106

MATCHLINE SEE SHEET L110

- Legend**
- Limits of Disturbance
 - Surveyed Tree Location**
 - Deciduous Tree (Living) to Be Protected
 - Deciduous Tree (Dead) to Be Protected
 - Deciduous Tree (Living) to Be Removed
 - Deciduous Tree (Dead) to Be Removed
 - Conifer (Living) to Be Protected
 - Conifer (Dead) to Be Protected
 - Conifer (Living) to Be Removed
 - Conifer (Dead) to Be Removed
 - Root Protection Zone
 - Existing Access Road Centerline
 - Proposed Temporary Access Road
 - Proposed Temporary Logging Haul Route
 - Proposed Temporary Circulation Route
 - Edge of Roadway/Access Road (approximate)
 - Trail
 - Cut Area
 - Fill Area
 - Wetland/Ordinary High Water (OHW)
 - Drainage Reserve Area
 - Drainage Flow Arrow
 - Culvert
 - 100-year Floodplain
 - Multnomah County Tax Lot
 - Zoning (City of Portland)
 - Environmental Transition Zone
 - Forest Park Boundary
 - Powerline Easement
 - Contour (5-foot intervals, vertical datum NAVD88)
- Zoning (City of Portland):**
- RF = Farm and Forest
 - IH = Heavy Industrial
 - OS = Open Space
 - c = Environmental Conservation
 - d = Design
 - g = River General
 - i = River Industrial
 - k = Prime Industrial
 - p = Environmental Protection
 - q = Water Quality Resource Area
 - s = Scenic Resource

Area of Temporary Wetland Encroachment:
Wetland F (Harborton S/S): 12,528 sq ft; 0.29 ac
Area of Temporary Disturbance in Greenway Setback:
3,078 sq ft; 0.07 ac
Area of Permanent Wetland Encroachment:
Wetland A (Forest Park): 1,074 sq ft; 0.02 ac
Wetland B (Forest Park): 1,854 sq ft; 0.04 ac

- NOTES:**
1. Root protection zones for single-stem trees are calculated by DBH x 1-ft. Therefore, a 6-in DBH tree has a root protection zone of 6-ft in diameter. For multi-stemmed trees, see Mitigation Site Plan Details II, SHT. L325. Root protection zones are not shown for trees to be removed or dead trees.
 2. Vine Maples and all trees with a DBH less than 6-in are not shown on these plans.
 3. South of the Harborton Substation, only trees with RPZs which overlap with the Limits of Disturbance are shown on these plans; all surveyed trees are included in the Project Site area.
 4. See Construction Management Plan set for tree protection fencing.
 5. Tax lots which intersect the Limits of Disturbance are labeled with the Tax Lot ID # and acreage.



MATCHLINE SEE SHEET L107

MATCHLINE SEE SHEET L111

MATCHLINE SEE SHEET L108

MATCHLINE SEE SHEET L108

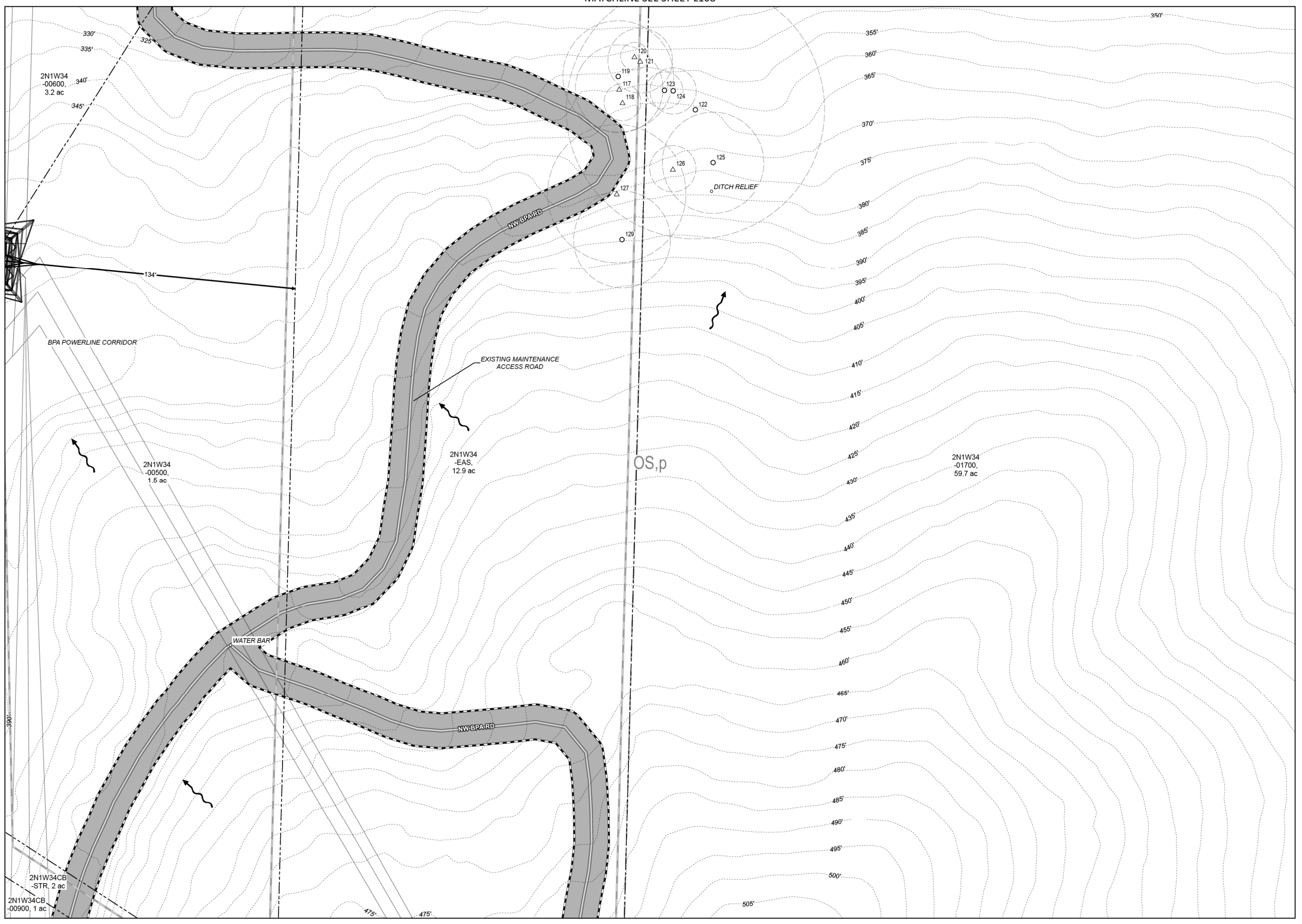
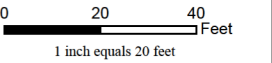
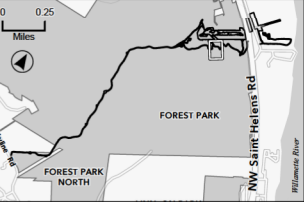


- Legend**
- Limits of Disturbance
 - Surveyed Tree Location**
 - Deciduous Tree (Living) to Be Protected
 - Deciduous Tree (Dead) to Be Protected
 - Deciduous Tree (Living) to Be Removed
 - Deciduous Tree (Dead) to Be Removed
 - Conifer (Living) to Be Protected
 - Conifer (Dead) to Be Protected
 - Conifer (Living) to Be Removed
 - Conifer (Dead) to Be Removed
 - Root Protection Zone
 - Existing Access Road Centerline
 - Proposed Temporary Access Road
 - Proposed Temporary Logging Haul Route
 - Proposed Temporary Circulation Route
 - Edge of Roadway/Access Road (approximate)
 - Trail
 - Cut Area
 - Fill Area
 - Wetland/Ordinary High Water (OHW)
 - Drainage Reserve Area
 - Drainage Flow Arrow
 - Culvert
 - 100-year Floodplain
 - Multnomah County Tax Lot
 - Zoning (City of Portland)
 - Environmental Transition Zone
 - Forest Park Boundary
 - Powerline Easement
 - Contour (5-foot intervals, vertical datum NAVD88)

- Zoning (City of Portland):**
- RF = Farm and Forest
 - IH = Heavy Industrial
 - OS = Open Space
 - c = Environmental Conservation
 - d = Design
 - g = River General
 - i = River Industrial
 - k = Prime Industrial
 - p = Environmental Protection
 - q = Water Quality Resource Area
 - s = Scenic Resource

- Area of Temporary Wetland Encroachment:**
Wetland F (Harborton S/S): 12,528 sq ft; 0.29 ac
Area of Temporary Disturbance in Greenway Setback:
3,078 sq ft; 0.07 ac
Area of Permanent Wetland Encroachment:
Wetland A (Forest Park): 1,074 sq ft; 0.02 ac
Wetland B (Forest Park): 1,854 sq ft; 0.04 ac

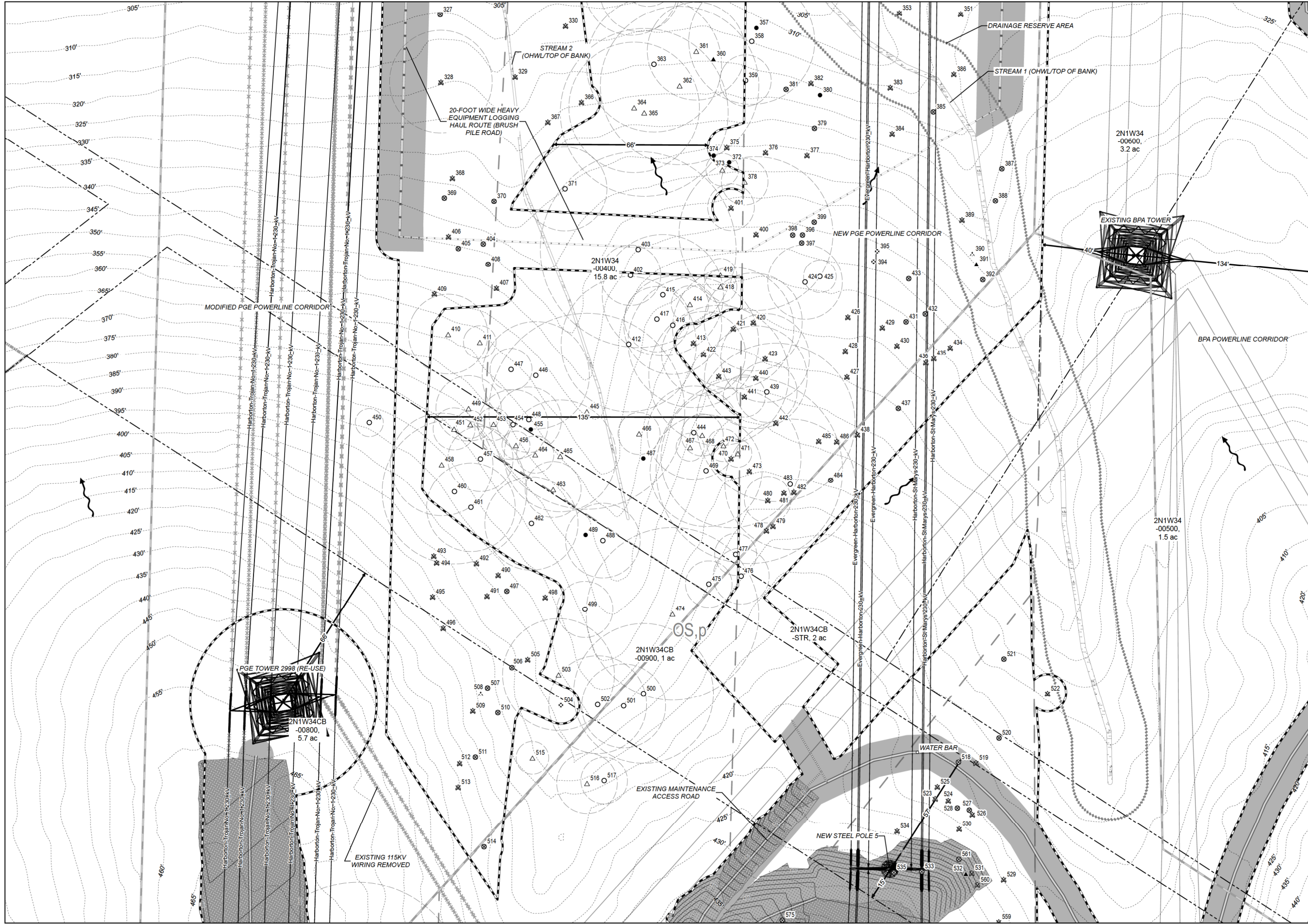
- NOTES:**
1. Root protection zones for single-stem trees are calculated by DBH x 1-ft. Therefore, a 6-in DBH tree has a root protection zone of 6-ft in diameter. For multi-stemmed trees, see Mitigation Site Plan Details II, SHT. L325. Root protection zones are not shown for trees to be removed or dead trees.
 2. Vine Maples and all trees with a DBH less than 6-in are not shown on these plans.
 3. South of the Harborton Substation, only trees with RPZs which overlap with the Limits of Disturbance are shown on these plans; all surveyed trees are included in the Project Site area.
 4. See Construction Management Plan set for tree protection fencing.
 5. Tax lots which intersect the Limits of Disturbance are labeled with the Tax Lot ID # and acreage.



MATCHLINE SEE SHEET L111

MATCHLINE SEE SHEET L112

MATCHLINE SEE SHEET L109



MATCHLINE SEE SHEET L113

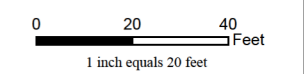
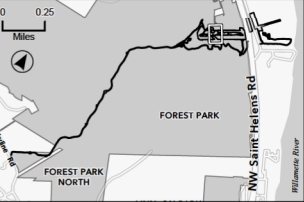


- Legend**
- Limits of Disturbance
 - Surveyed Tree Location**
 - Deciduous Tree (Living) to Be Protected
 - Deciduous Tree (Dead) to Be Protected
 - Deciduous Tree (Living) to Be Removed
 - Deciduous Tree (Dead) to Be Removed
 - Conifer (Living) to Be Protected
 - Conifer (Dead) to Be Protected
 - Conifer (Living) to Be Removed
 - Conifer (Dead) to Be Removed
 - Root Protection Zone
 - Existing Access Road Centerline
 - Proposed Temporary Access Road
 - Proposed Temporary Logging Haul Route
 - Proposed Temporary Circulation Route
 - Edge of Roadway/Access Road (approximate)
 - Trail
 - Cut Area
 - Fill Area
 - Wetland/Ordinary High Water (OHW)
 - Drainage Reserve Area
 - Drainage Flow Arrow
 - Culvert
 - 100-year Floodplain
 - Multnomah County Tax Lot
 - Zoning (City of Portland)
 - Environmental Transition Zone
 - Forest Park Boundary
 - Powerline Easement
 - Contour (5-foot intervals, vertical datum NAVD88)

- Zoning (City of Portland):**
- RF = Farm and Forest
 - IH = Heavy Industrial
 - OS = Open Space
 - c = Environmental Conservation
 - d = Design
 - g = River General
 - i = River Industrial
 - k = Prime Industrial
 - p = Environmental Protection
 - q = Water Quality Resource Area
 - s = Scenic Resource

- Area of Temporary Wetland Encroachment:**
Wetland F (Harborton S/S): 12,528 sq ft; 0.29 ac
Area of Temporary Disturbance in Greenway Setback:
3,078 sq ft; 0.07 ac
Area of Permanent Wetland Encroachment:
Wetland A (Forest Park): 1,074 sq ft; 0.02 ac
Wetland B (Forest Park): 1,854 sq ft; 0.04 ac

- NOTES:**
1. Root protection zones for single-stem trees are calculated by DBH x 1-ft. Therefore, a 6-in DBH tree has a root protection zone of 6-ft in diameter. For multi-stemmed trees, see Mitigation Site Plan Details II, SHT. L325. Root protection zones are not shown for trees to be removed or dead trees.
 2. Vine Maples and all trees with a DBH less than 6-in are not shown on these plans.
 3. South of the Harborton Substation, only trees with RPZs which overlap with the Limits of Disturbance are shown on these plans; all surveyed trees are included in the Project Site area.
 4. See Construction Management Plan set for tree protection fencing.
 5. Tax lots which intersect the Limits of Disturbance are labeled with the Tax Lot ID # and acreage.



MATCHLINE SEE SHEET L110



MATCHLINE SEE SHEET L113

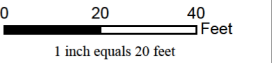
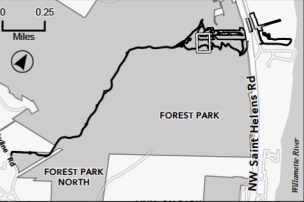


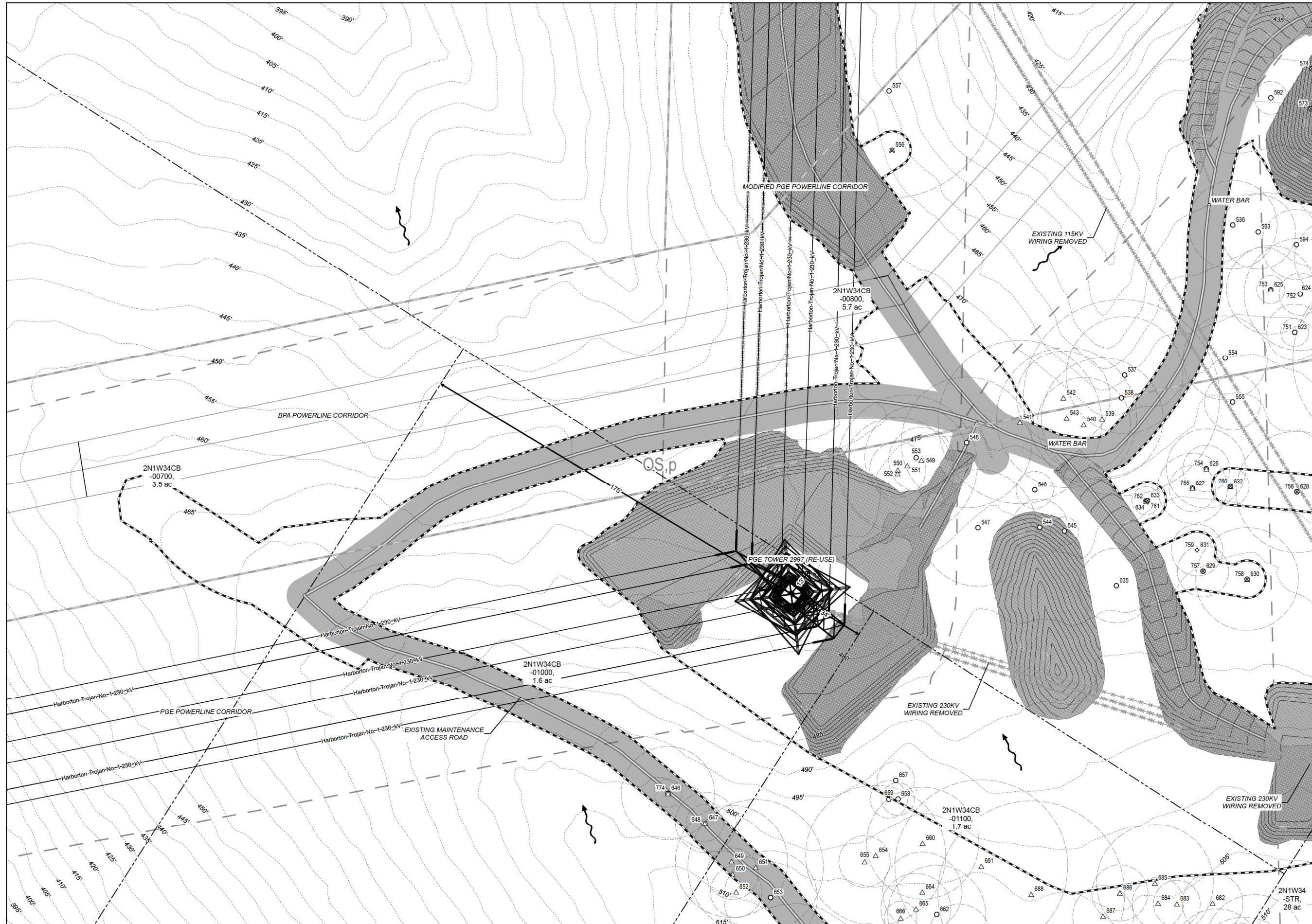
- Legend**
- Limits of Disturbance
 - Surveyed Tree Location
 - Deciduous Tree (Living) to Be Protected
 - Deciduous Tree (Dead) to Be Protected
 - Deciduous Tree (Living) to Be Removed
 - Deciduous Tree (Dead) to Be Removed
 - Conifer (Living) to Be Protected
 - Conifer (Dead) to Be Protected
 - Conifer (Living) to Be Removed
 - Conifer (Dead) to Be Removed
 - Root Protection Zone
 - Existing Access Road Centerline
 - Proposed Temporary Access Road
 - Proposed Temporary Logging Haul Route
 - Proposed Temporary Circulation Route
 - Edge of Roadway/Access Road (approximate)
 - Trail
 - Cut Area
 - Fill Area
 - Wetland/Ordinary High Water (OHW)
 - Drainage Reserve Area
 - Drainage Flow Arrow
 - Culvert
 - 100-year Floodplain
 - Multnomah County Tax Lot
 - Zoning (City of Portland)
 - Environmental Transition Zone
 - Forest Park Boundary
 - Powerline Easement
 - Contour (5-foot intervals, vertical datum NAVD88)

- Zoning (City of Portland):**
- RF = Farm and Forest
 - IH = Heavy Industrial
 - OS = Open Space
 - c = Environmental Conservation
 - d = Design
 - g = River General
 - i = River Industrial
 - k = Prime Industrial
 - p = Environmental Protection
 - q = Water Quality Resource Area
 - s = Scenic Resource

- Area of Temporary Wetland Encroachment:**
Wetland F (Harborton S/S): 12,528 sq ft; 0.29 ac
Area of Temporary Disturbance in Greenway Setback:
3,078 sq ft; 0.07 ac
Area of Permanent Wetland Encroachment:
Wetland A (Forest Park): 1,074 sq ft; 0.02 ac
Wetland B (Forest Park): 1,854 sq ft; 0.04 ac

- NOTES:**
1. Root protection zones for single-stem trees are calculated by DBH x 1-ft. Therefore, a 6-in DBH tree has a root protection zone of 6-ft in diameter. For multi-stemmed trees, see Mitigation Site Plan Details II, SHT. L325. Root protection zones are not shown for trees to be removed or dead trees.
 2. Vine Maples and all trees with a DBH less than 6-in are not shown on these plans.
 3. South of the Harborton Substation, only trees with RPZs which overlap with the Limits of Disturbance are shown on these plans; all surveyed trees are included in the Project Site area.
 4. See Construction Management Plan set for tree protection fencing.
 5. Tax lots which intersect the Limits of Disturbance are labeled with the Tax Lot ID # and acreage.





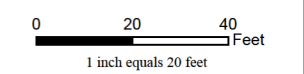
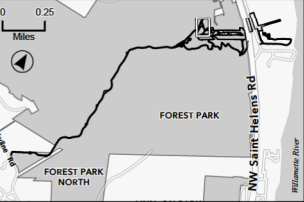
- Legend**
- Limits of Disturbance
 - Surveyed Tree Location**
 - Deciduous Tree (Living) to Be Protected
 - Deciduous Tree (Dead) to Be Protected
 - Deciduous Tree (Living) to Be Removed
 - Deciduous Tree (Dead) to Be Removed
 - Conifer (Living) to Be Protected
 - Conifer (Dead) to Be Protected
 - Conifer (Living) to Be Removed
 - Conifer (Dead) to Be Removed
 - Root Protection Zone
 - Existing Access Road Centerline
 - Proposed Temporary Access Road
 - Proposed Temporary Logging Haul Route
 - Proposed Temporary Circulation Route
 - Edge of Roadway/Access Road (approximate)
 - Trail
 - Cut Area
 - Fill Area
 - Wetland/Ordinary High Water (OHW)
 - Drainage Reserve Area
 - Drainage Flow Arrow
 - Culvert
 - 100-year Floodplain
 - Multnomah County Tax Lot
 - Zoning (City of Portland)
 - Environmental Transition Zone
 - Forest Park Boundary
 - Powerline Easement
 - Contour (5-foot intervals, vertical datum NAVD88)

- Zoning (City of Portland):**
- RF = Farm and Forest
 - IH = Heavy Industrial
 - OS = Open Space
 - c = Environmental Conservation
 - d = Design
 - g = River General
 - i = River Industrial
 - k = Prime Industrial
 - p = Environmental Protection
 - q = Water Quality Resource Area
 - s = Scenic Resource

- Area of Temporary Wetland Encroachment:**
 Wetland F (Harborton S/S): 12,528 sq ft; 0.29 ac
Area of Temporary Disturbance in Greenway Setback:
 3,078 sq ft; 0.07 ac
Area of Permanent Wetland Encroachment:
 Wetland A (Forest Park): 1,074 sq ft; 0.02 ac
 Wetland B (Forest Park): 1,854 sq ft; 0.04 ac

- NOTES:**
1. Root protection zones for single-stem trees are calculated by DBH x 1-ft. Therefore, a 6-in DBH tree has a root protection zone of 6-ft in diameter. For multi-stemmed trees, see Mitigation Site Plan Details II, SHT. L325. Root protection zones are not shown for trees to be removed or dead trees.
 2. Vine Maples and all trees with a DBH less than 6-in are not shown on these plans.
 3. South of the Harborton Substation, only trees with RPZs which overlap with the Limits of Disturbance are shown on these plans; all surveyed trees are included in the Project Site area.
 4. See Construction Management Plan set for tree protection fencing.
 5. Tax lots which intersect the Limits of Disturbance are labeled with the Tax Lot ID # and acreage.

MATCHLINE SEE SHEET L112



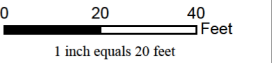
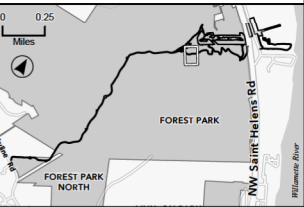


- Legend**
- Limits of Disturbance
 - Surveyed Tree Location**
 - Deciduous Tree (Living) to Be Protected
 - Deciduous Tree (Dead) to Be Protected
 - Deciduous Tree (Living) to Be Removed
 - Deciduous Tree (Dead) to Be Removed
 - Conifer (Living) to Be Protected
 - Conifer (Dead) to Be Protected
 - Conifer (Living) to Be Removed
 - Conifer (Dead) to Be Removed
 - Root Protection Zone
 - Existing Access Road Centerline
 - Proposed Temporary Access Road
 - Proposed Temporary Logging Haul Route
 - Proposed Temporary Circulation Route
 - Edge of Roadway/Access Road (approximate)
 - Trail
 - Cut Area
 - Fill Area
 - Wetland/Ordinary High Water (OHW)
 - Drainage Reserve Area
 - Drainage Flow Arrow
 - Culvert
 - 100-year Floodplain
 - Multnomah County Tax Lot
 - Zoning (City of Portland)
 - Environmental Transition Zone
 - Forest Park Boundary
 - Powerline Easement
 - Contour (5-foot intervals, vertical datum NAVD88)

- Zoning (City of Portland):**
- RF = Farm and Forest
 - IH = Heavy Industrial
 - OS = Open Space
 - c = Environmental Conservation
 - d = Design
 - g = River General
 - i = River Industrial
 - k = Prime Industrial
 - p = Environmental Protection
 - q = Water Quality Resource Area
 - s = Scenic Resource

- Area of Temporary Wetland Encroachment:**
Wetland F (Harborton S/S): 12,528 sq ft; 0.29 ac
- Area of Temporary Disturbance in Greenway Setback:**
3,078 sq ft; 0.07 ac
- Area of Permanent Wetland Encroachment:**
Wetland A (Forest Park): 1,074 sq ft; 0.02 ac
Wetland B (Forest Park): 1,854 sq ft; 0.04 ac

- NOTES:**
1. Root protection zones for single-stem trees are calculated by DBH x 1-ft. Therefore, a 6-in DBH tree has a root protection zone of 6-ft in diameter. For multi-stemmed trees, see Mitigation Site Plan Details II, SHT. L325. Root protection zones are not shown for trees to be removed or dead trees.
 2. Vine Maples and all trees with a DBH less than 6-in are not shown on these plans.
 3. South of the Harborton Substation, only trees with RPZs which overlap with the Limits of Disturbance are shown on these plans; all surveyed trees are included in the Project Site area.
 4. See Construction Management Plan set for tree protection fencing.
 5. Tax lots which intersect the Limits of Disturbance are labeled with the Tax Lot ID # and acreage.



MATCHLINE SEE SHEET L115





Legend

- Limits of Disturbance
- Surveyed Tree Location**
- Deciduous Tree (Living) to Be Protected
- Deciduous Tree (Dead) to Be Protected
- Deciduous Tree (Living) to Be Removed
- Deciduous Tree (Dead) to Be Removed
- Conifer (Living) to Be Protected
- Conifer (Dead) to Be Protected
- Conifer (Living) to Be Removed
- Conifer (Dead) to Be Removed
- Root Protection Zone
- Existing Access Road Centerline
- Proposed Temporary Access Road
- Proposed Temporary Logging Haul Route
- Proposed Temporary Circulation Route
- Edge of Roadway/Access Road (approximate)
- Trail
- Cut Area
- Fill Area
- Wetland/Ordinary High Water (OHW)
- Drainage Reserve Area
- Drainage Flow Arrow
- Culvert
- 100-year Floodplain
- Multnomah County Tax Lot
- Zoning (City of Portland)
- Environmental Transition Zone
- Forest Park Boundary
- Powerline Easement
- Contour (5-foot intervals, vertical datum NAVD88)

Zoning (City of Portland):

- RF = Farm and Forest
- IH = Heavy Industrial
- OS = Open Space
- c = Environmental Conservation
- d = Design
- g = River General
- i = River Industrial
- k = Prime Industrial
- p = Environmental Protection
- q = Water Quality Resource Area
- s = Scenic Resource

Area of Temporary Wetland Encroachment:

Wetland F (Harborton S/S): 12,528 sq ft; 0.29 ac

Area of Temporary Disturbance in Greenway Setback:

3,078 sq ft; 0.07 ac

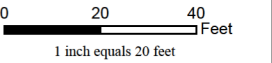
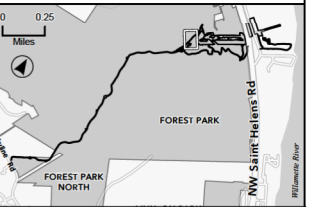
Area of Permanent Wetland Encroachment:

Wetland A (Forest Park): 1,074 sq ft; 0.02 ac

Wetland B (Forest Park): 1,854 sq ft; 0.04 ac

NOTES:

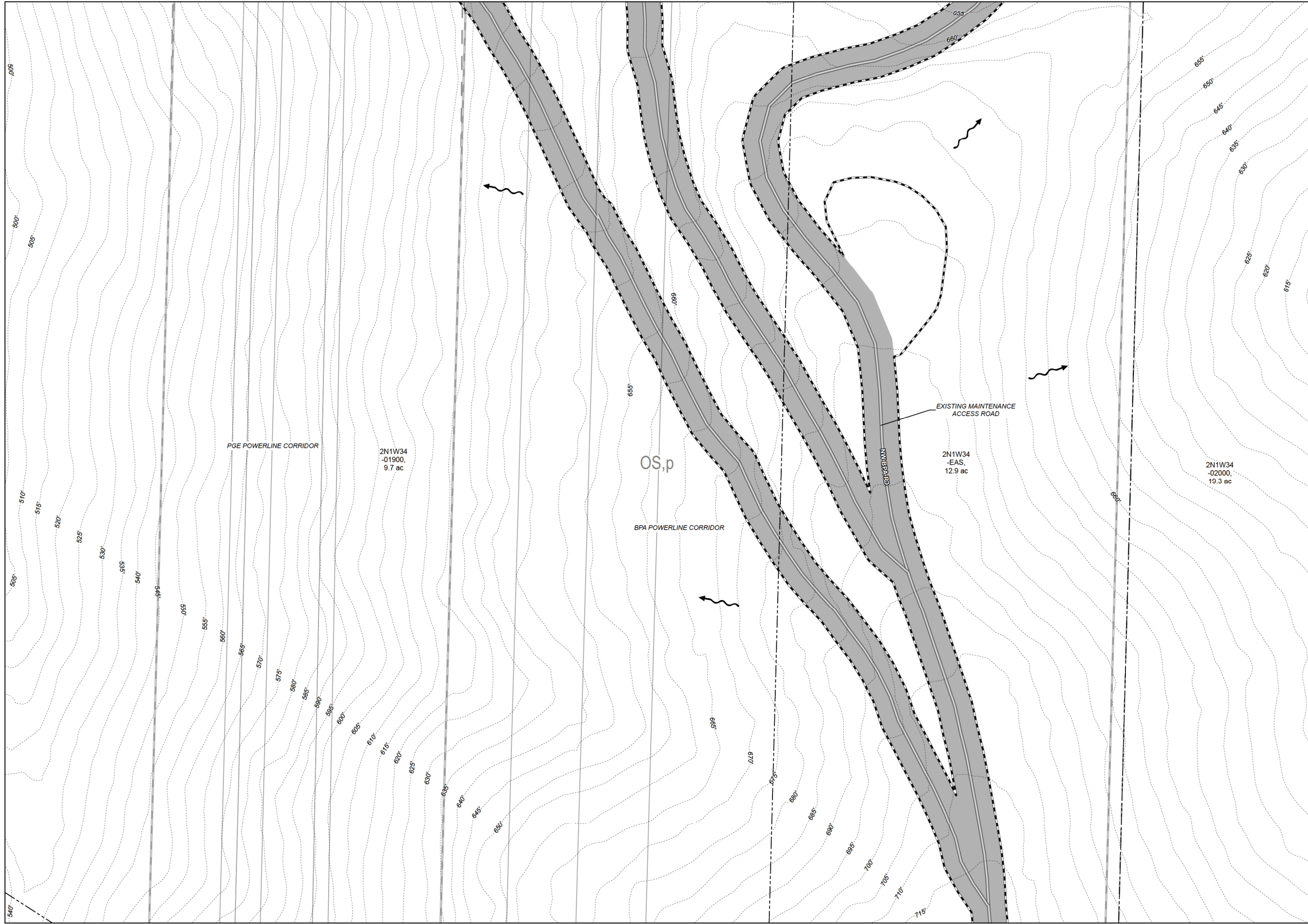
1. Root protection zones for single-stem trees are calculated by DBH x 1-ft. Therefore, a 6-in DBH tree has a root protection zone of 6-ft in diameter. For multi-stemmed trees, see Mitigation Site Plan Details II, SHT. L325. Root protection zones are not shown for trees to be removed or dead trees.
2. Vine Maples and all trees with a DBH less than 6-in are not shown on these plans.
3. South of the Harborton Substation, only trees with RPZs which overlap with the Limits of Disturbance are shown on these plans; all surveyed trees are included in the Project Site area.
4. See Construction Management Plan set for tree protection fencing.
5. Tax lots which intersect the Limits of Disturbance are labeled with the Tax Lot ID # and acreage.



MATCHLINE SEE SHEET L114

MATCHLINE SEE SHEET L113

MATCHLINE SEE SHEET L116

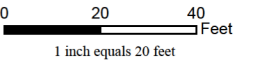
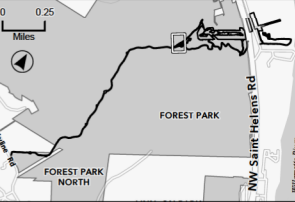


- Legend**
- Limits of Disturbance
 - Surveyed Tree Location**
 - Deciduous Tree (Living) to Be Protected
 - Deciduous Tree (Dead) to Be Protected
 - Deciduous Tree (Living) to Be Removed
 - Deciduous Tree (Dead) to Be Removed
 - Conifer (Living) to Be Protected
 - Conifer (Dead) to Be Protected
 - Conifer (Living) to Be Removed
 - Conifer (Dead) to Be Removed
 - Root Protection Zone
 - Existing Access Road Centerline
 - Proposed Temporary Access Road
 - Proposed Temporary Logging Haul Route
 - Proposed Temporary Circulation Route
 - Edge of Roadway/Access Road (approximate)
 - Trail
 - Cut Area
 - Fill Area
 - Wetland/Ordinary High Water (OHW)
 - Drainage Reserve Area
 - Drainage Flow Arrow
 - Culvert
 - 100-year Floodplain
 - Multnomah County Tax Lot
 - Zoning (City of Portland)
 - Environmental Transition Zone
 - Forest Park Boundary
 - Powerline Easement
 - Contour (5-foot intervals, vertical datum NAVD88)

- Zoning (City of Portland):**
- RF = Farm and Forest
 - IH = Heavy Industrial
 - OS = Open Space
 - c = Environmental Conservation
 - d = Design
 - g = River General
 - i = River Industrial
 - k = Prime Industrial
 - p = Environmental Protection
 - q = Water Quality Resource Area
 - s = Scenic Resource

- Area of Temporary Wetland Encroachment:**
Wetland F (Harborton S/S): 12,528 sq ft; 0.29 ac
- Area of Temporary Disturbance in Greenway Setback:**
3,078 sq ft; 0.07 ac
- Area of Permanent Wetland Encroachment:**
Wetland A (Forest Park): 1,074 sq ft; 0.02 ac
Wetland B (Forest Park): 1,854 sq ft; 0.04 ac

- NOTES:**
1. Root protection zones for single-stem trees are calculated by DBH x 1-ft. Therefore, a 6-in DBH tree has a root protection zone of 6-ft in diameter. For multi-stemmed trees, see Mitigation Site Plan Details II, SHT. L325. Root protection zones are not shown for trees to be removed or dead trees.
 2. Vine Maples and all trees with a DBH less than 6-in are not shown on these plans.
 3. South of the Harborton Substation, only trees with RPZs which overlap with the Limits of Disturbance are shown on these plans; all surveyed trees are included in the Project Site area.
 4. See Construction Management Plan set for tree protection fencing.
 5. Tax lots which intersect the Limits of Disturbance are labeled with the Tax Lot ID # and acreage.



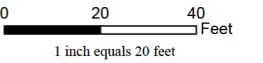
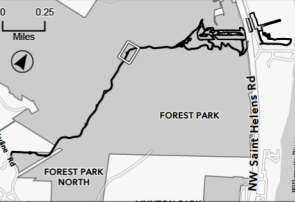


- Legend**
- Limits of Disturbance
 - Surveyed Tree Location**
 - Deciduous Tree (Living) to Be Protected
 - Deciduous Tree (Dead) to Be Protected
 - Deciduous Tree (Living) to Be Removed
 - Deciduous Tree (Dead) to Be Removed
 - Conifer (Living) to Be Protected
 - Conifer (Dead) to Be Protected
 - Conifer (Living) to Be Removed
 - Conifer (Dead) to Be Removed
 - Root Protection Zone
 - Existing Access Road Centerline
 - Proposed Temporary Access Road
 - Proposed Temporary Logging Haul Route
 - Proposed Temporary Circulation Route
 - Edge of Roadway/Access Road (approximate)
 - Trail
 - Cut Area
 - Fill Area
 - Wetland/Ordinary High Water (OHW)
 - Drainage Reserve Area
 - Drainage Flow Arrow
 - Culvert
 - 100-year Floodplain
 - Multnomah County Tax Lot
 - Zoning (City of Portland)
 - Environmental Transition Zone
 - Forest Park Boundary
 - Powerline Easement
 - Contour (5-foot intervals, vertical datum NAVD88)

- Zoning (City of Portland):**
- RF = Farm and Forest
 - IH = Heavy Industrial
 - OS = Open Space
 - c = Environmental Conservation
 - d = Design
 - g = River General
 - i = River Industrial
 - k = Prime Industrial
 - p = Environmental Protection
 - q = Water Quality Resource Area
 - s = Scenic Resource

- Area of Temporary Wetland Encroachment:**
Wetland F (Harborton S/S): 12,528 sq ft; 0.29 ac
- Area of Temporary Disturbance in Greenway Setback:**
3,078 sq ft; 0.07 ac
- Area of Permanent Wetland Encroachment:**
Wetland A (Forest Park): 1,074 sq ft; 0.02 ac
Wetland B (Forest Park): 1,854 sq ft; 0.04 ac

- NOTES:**
1. Root protection zones for single-stem trees are calculated by DBH x 1-ft. Therefore, a 6-in DBH tree has a root protection zone of 6-ft in diameter. For multi-stemmed trees, see Mitigation Site Plan Details II, SHT. L325. Root protection zones are not shown for trees to be removed or dead trees.
 2. Vine Maples and all trees with a DBH less than 6-in are not shown on these plans.
 3. South of the Harborton Substation, only trees with RPZs which overlap with the Limits of Disturbance are shown on these plans; all surveyed trees are included in the Project Site area.
 4. See Construction Management Plan set for tree protection fencing.
 5. Tax lots which intersect the Limits of Disturbance are labeled with the Tax Lot ID # and acreage.





Legend

- Limits of Disturbance
- Surveyed Tree Location**
- Deciduous Tree (Living) to Be Protected
- Deciduous Tree (Dead) to Be Protected
- Deciduous Tree (Living) to Be Removed
- Deciduous Tree (Dead) to Be Removed
- Conifer (Living) to Be Protected
- Conifer (Dead) to Be Protected
- Conifer (Living) to Be Removed
- Conifer (Dead) to Be Removed
- Root Protection Zone
- Existing Access Road Centerline
- Proposed Temporary Access Road
- Proposed Temporary Logging Haul Route
- Proposed Temporary Circulation Route
- Edge of Roadway/Access Road (approximate)
- Trail
- Cut Area
- Fill Area
- Wetland/Ordinary High Water (OHW)
- Drainage Reserve Area
- Culvert
- 100-year Floodplain
- Multnomah County Tax Lot
- Zoning (City of Portland)
- Environmental Transition Zone
- Forest Park Boundary
- Powerline Easement
- Contour (5-foot intervals, vertical datum NAVD88)

Zoning (City of Portland):

- RF = Farm and Forest
- IH = Heavy Industrial
- OS = Open Space
- c = Environmental Conservation
- d = Design
- g = River General
- i = River Industrial
- k = Prime Industrial
- p = Environmental Protection
- q = Water Quality Resource Area
- s = Scenic Resource

Area of Temporary Wetland Encroachment:

Wetland F (Harborton S/S): 12,528 sq ft; 0.29 ac

Area of Temporary Disturbance in Greenway Setback:

3,078 sq ft; 0.07 ac

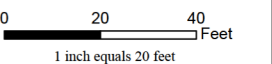
Area of Permanent Wetland Encroachment:

Wetland A (Forest Park): 1,074 sq ft; 0.02 ac

Wetland B (Forest Park): 1,854 sq ft; 0.04 ac

NOTES:

1. Root protection zones for single-stem trees are calculated by DBH x 1-ft. Therefore, a 6-in DBH tree has a root protection zone of 6-ft in diameter. For multi-stemmed trees, see Mitigation Site Plan Details II, SHT. L325. Root protection zones are not shown for trees to be removed or dead trees.
2. Vine Maples and all trees with a DBH less than 6-in are not shown on these plans.
3. South of the Harborton Substation, only trees with RPZs which overlap with the Limits of Disturbance are shown on these plans; all surveyed trees are included in the Project Site area.
4. See Construction Management Plan set for tree protection fencing.
5. Tax lots which intersect the Limits of Disturbance are labeled with the Tax Lot ID # and acreage.



MATCHLINE SEE SHEET L119



Legend

- Limits of Disturbance
- Surveyed Tree Location**
- Deciduous Tree (Living) to Be Protected
- Deciduous Tree (Dead) to Be Protected
- Deciduous Tree (Living) to Be Removed
- Deciduous Tree (Dead) to Be Removed
- Conifer (Living) to Be Protected
- Conifer (Dead) to Be Protected
- Conifer (Living) to Be Removed
- Conifer (Dead) to Be Removed
- Root Protection Zone
- Existing Access Road Centerline
- Proposed Temporary Access Road
- Proposed Temporary Logging Haul Route
- Proposed Temporary Circulation Route
- Edge of Roadway/Access Road (approximate)
- Trail
- Cut Area
- Fill Area
- Wetland/Ordinary High Water (OHW)
- Drainage Reserve Area
- Drainage Flow Arrow
- Culvert
- 100-year Floodplain
- Multnomah County Tax Lot
- Zoning (City of Portland)
- Environmental Transition Zone
- Forest Park Boundary
- Powerline Easement
- Contour (5-foot intervals, vertical datum NAVD88)

Zoning (City of Portland):

- RF = Farm and Forest
- IH = Heavy Industrial
- OS = Open Space
- c = Environmental Conservation
- d = Design
- g = River General
- i = River Industrial
- k = Prime Industrial
- p = Environmental Protection
- q = Water Quality Resource Area
- s = Scenic Resource

Area of Temporary Wetland Encroachment:

Wetland F (Harborton S/S): 12,528 sq ft; 0.29 ac

Area of Temporary Disturbance in Greenway Setback:

3,078 sq ft; 0.07 ac

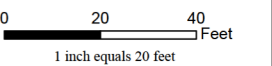
Area of Permanent Wetland Encroachment:

Wetland A (Forest Park): 1,074 sq ft; 0.02 ac

Wetland B (Forest Park): 1,854 sq ft; 0.04 ac

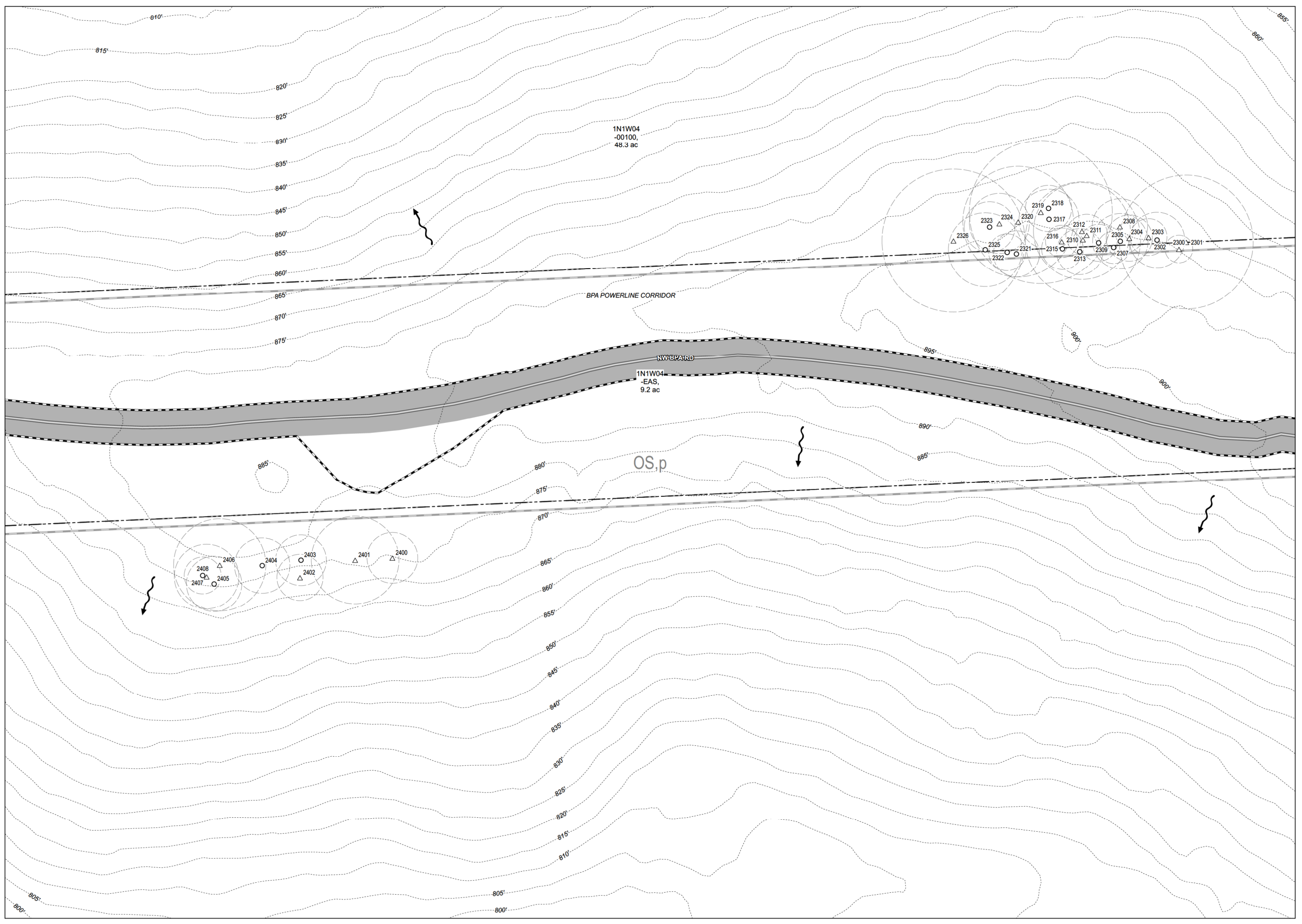
NOTES:

1. Root protection zones for single-stem trees are calculated by DBH x 1-ft. Therefore, a 6-in DBH tree has a root protection zone of 6-ft in diameter. For multi-stemmed trees, see Mitigation Site Plan Details II, SHT. L325. Root protection zones are not shown for trees to be removed or dead trees.
2. Vine Maples and all trees with a DBH less than 6-in are not shown on these plans.
3. South of the Harborton Substation, only trees with RPZs which overlap with the Limits of Disturbance are shown on these plans; all surveyed trees are included in the Project Site area.
4. See Construction Management Plan set for tree protection fencing.
5. Tax lots which intersect the Limits of Disturbance are labeled with the Tax Lot ID # and acreage.



MATCHLINE SEE SHEET L118

MATCHLINE SEE SHEET L120





Legend

- Limits of Disturbance
- Surveyed Tree Location**
- Deciduous Tree (Living) to Be Protected
- Deciduous Tree (Dead) to Be Protected
- Deciduous Tree (Living) to Be Removed
- Deciduous Tree (Dead) to Be Removed
- Conifer (Living) to Be Protected
- Conifer (Dead) to Be Protected
- Conifer (Living) to Be Removed
- Conifer (Dead) to Be Removed
- Root Protection Zone
- Existing Access Road Centerline
- Proposed Temporary Access Road
- Proposed Temporary Logging Haul Route
- Proposed Temporary Circulation Route
- Edge of Roadway/Access Road (approximate)
- Trail
- Cut Area
- Fill Area
- Wetland/Ordinary High Water (OHW)
- Drainage Reserve Area
- Drainage Flow Arrow
- Culvert
- 100-year Floodplain
- Multnomah County Tax Lot
- Zoning (City of Portland)
- Environmental Transition Zone
- Forest Park Boundary
- Powerline Easement
- Contour (5-foot intervals, vertical datum NAVD88)

Zoning (City of Portland):

- RF = Farm and Forest
- IH = Heavy Industrial
- OS = Open Space
- c = Environmental Conservation
- d = Design
- g = River General
- i = River Industrial
- k = Prime Industrial
- p = Environmental Protection
- q = Water Quality Resource Area
- s = Scenic Resource

Area of Temporary Wetland Encroachment:

Wetland F (Harborton S/S): 12,528 sq ft; 0.29 ac

Area of Temporary Disturbance in Greenway Setback:

3,078 sq ft; 0.07 ac

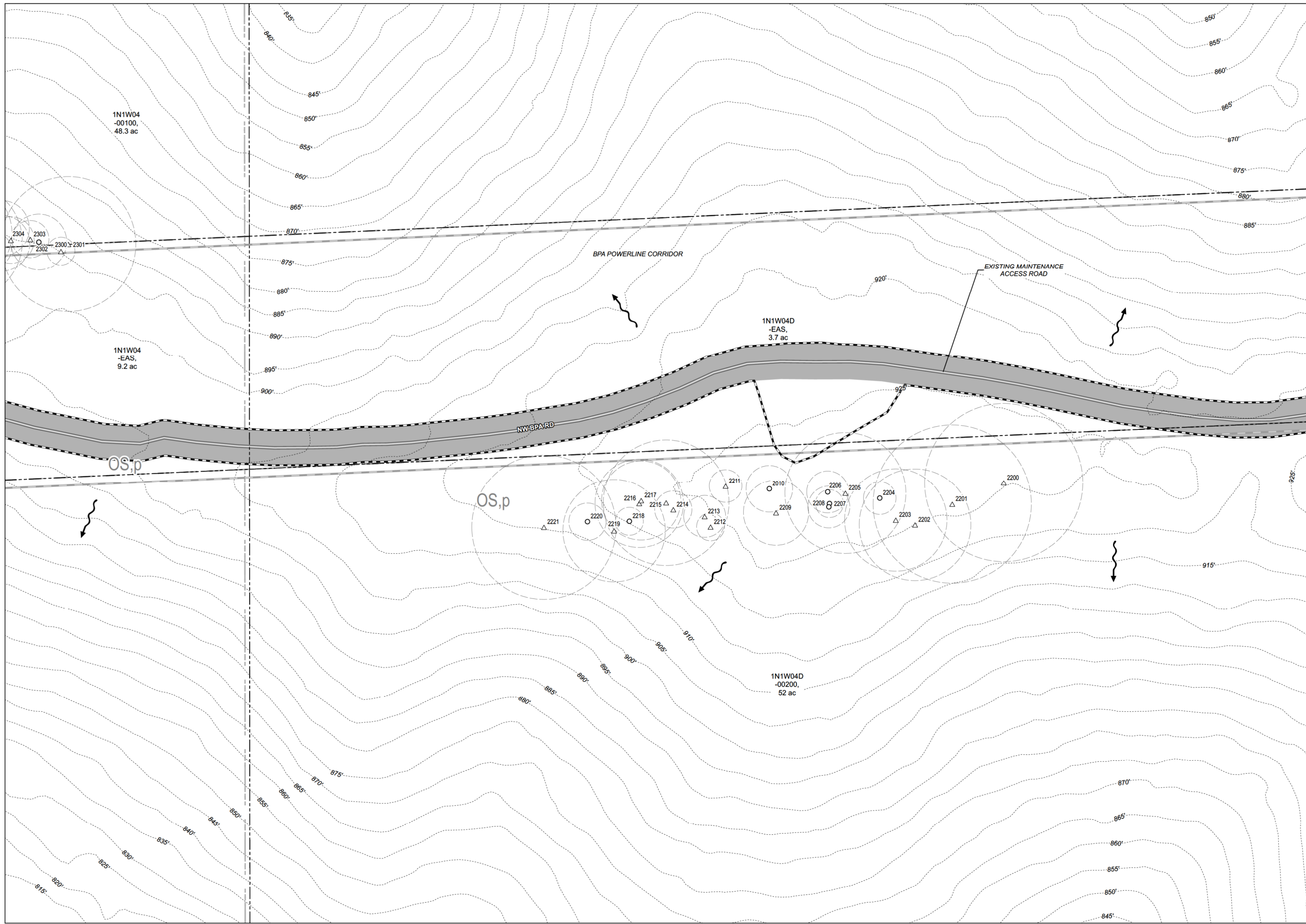
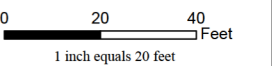
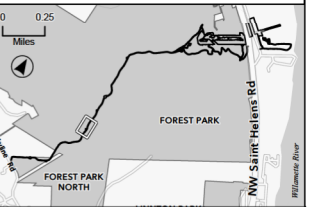
Area of Permanent Wetland Encroachment:

Wetland A (Forest Park): 1,074 sq ft; 0.02 ac

Wetland B (Forest Park): 1,854 sq ft; 0.04 ac

NOTES:

1. Root protection zones for single-stem trees are calculated by DBH x 1-ft. Therefore, a 6-in DBH tree has a root protection zone of 6-ft in diameter. For multi-stemmed trees, see Mitigation Site Plan Details II, SHT. L325. Root protection zones are not shown for trees to be removed or dead trees.
2. Vine Maples and all trees with a DBH less than 6-in are not shown on these plans.
3. South of the Harborton Substation, only trees with RPZs which overlap with the Limits of Disturbance are shown on these plans; all surveyed trees are included in the Project Site area.
4. See Construction Management Plan set for tree protection fencing.
5. Tax lots which intersect the Limits of Disturbance are labeled with the Tax Lot # and acreage.



MATCHLINE SEE SHEET L119



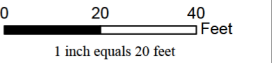
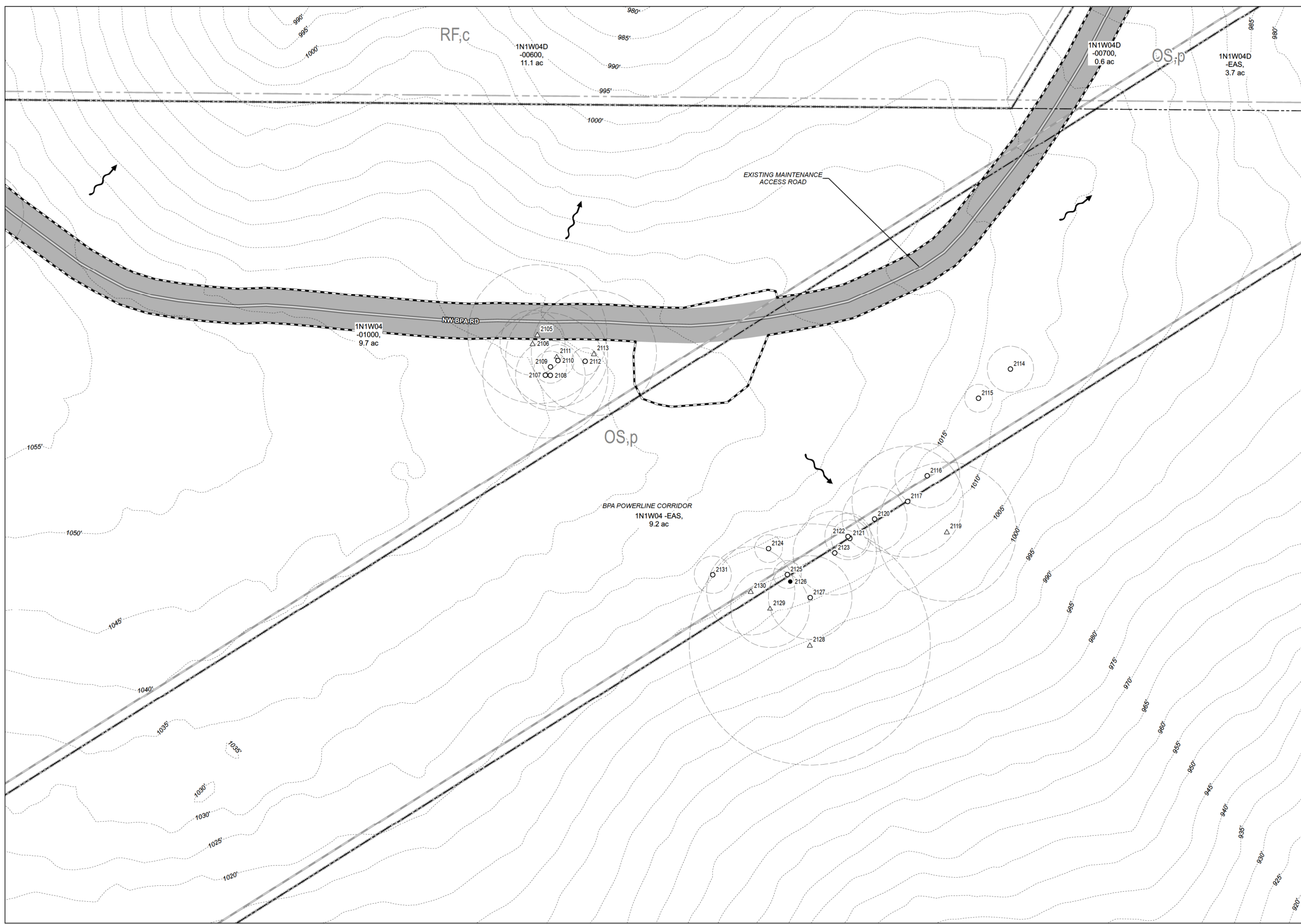
- Legend**
- Limits of Disturbance
 - Surveyed Tree Location**
 - Deciduous Tree (Living) to Be Protected
 - Deciduous Tree (Dead) to Be Protected
 - Deciduous Tree (Living) to Be Removed
 - Deciduous Tree (Dead) to Be Removed
 - Conifer (Living) to Be Protected
 - Conifer (Dead) to Be Protected
 - Conifer (Living) to Be Removed
 - Conifer (Dead) to Be Removed
 - Root Protection Zone
 - Existing Access Road Centerline
 - Proposed Temporary Access Road
 - Proposed Temporary Logging Haul Route
 - Proposed Temporary Circulation Route
 - Edge of Roadway/Access Road (approximate)
 - Trail
 - Cut Area
 - Fill Area
 - Wetland/Ordinary High Water (OHW)
 - Drainage Reserve Area
 - Culvert
 - 100-year Floodplain
 - Multnomah County Tax Lot
 - Zoning (City of Portland)
 - Environmental Transition Zone
 - Forest Park Boundary
 - Powerline Easement
 - Contour (5-foot intervals, vertical datum NAVD88)

- Zoning (City of Portland):**
- RF = Farm and Forest
 - IH = Heavy Industrial
 - OS = Open Space
 - c = Environmental Conservation
 - d = Design
 - g = River General
 - i = River Industrial
 - k = Prime Industrial
 - p = Environmental Protection
 - q = Water Quality Resource Area
 - s = Scenic Resource

- Area of Temporary Wetland Encroachment:**
Wetland F (Harborton S/S): 12,528 sq ft; 0.29 ac
- Area of Temporary Disturbance in Greenway Setback:**
3,078 sq ft; 0.07 ac
- Area of Permanent Wetland Encroachment:**
Wetland A (Forest Park): 1,074 sq ft; 0.02 ac
Wetland B (Forest Park): 1,854 sq ft; 0.04 ac

- NOTES:**
1. Root protection zones for single-stem trees are calculated by DBH x 1-ft. Therefore, a 6-in DBH tree has a root protection zone of 6-ft in diameter. For multi-stemmed trees, see Mitigation Site Plan Details II, SHT. L325. Root protection zones are not shown for trees to be removed or dead trees.
 2. Vine Maples and all trees with a DBH less than 6-in are not shown on these plans.
 3. South of the Harborton Substation, only trees with RPZs which overlap with the Limits of Disturbance are shown on these plans; all surveyed trees are included in the Project Site area.
 4. See Construction Management Plan set for tree protection fencing.
 5. Tax lots which intersect the Limits of Disturbance are labeled with the Tax Lot ID # and acreage.

MATCHLINE SEE SHEET L122





Legend

- Limits of Disturbance
- Surveyed Tree Location**
- Deciduous Tree (Living) to Be Protected
- Deciduous Tree (Dead) to Be Protected
- Deciduous Tree (Living) to Be Removed
- Deciduous Tree (Dead) to Be Removed
- Conifer (Living) to Be Protected
- Conifer (Dead) to Be Protected
- Conifer (Living) to Be Removed
- Conifer (Dead) to Be Removed
- Root Protection Zone
- Existing Access Road Centerline
- Proposed Temporary Access Road
- Proposed Temporary Logging Haul Route
- Proposed Temporary Circulation Route
- Edge of Roadway/Access Road (approximate)
- Trail
- Cut Area
- Fill Area
- Wetland/Ordinary High Water (OHW)
- Drainage Reserve Area
- Drainage Flow Arrow
- Culvert
- 100-year Floodplain
- Multnomah County Tax Lot
- Zoning (City of Portland)
- Environmental Transition Zone
- Forest Park Boundary
- Powerline Easement
- Contour (5-foot intervals, vertical datum NAVD88)

Zoning (City of Portland):

- RF = Farm and Forest
- IH = Heavy Industrial
- OS = Open Space
- c = Environmental Conservation
- d = Design
- g = River General
- i = River Industrial
- k = Prime Industrial
- p = Environmental Protection
- q = Water Quality Resource Area
- s = Scenic Resource

Area of Temporary Wetland Encroachment:

Wetland F (Harborton S/S): 12,528 sq ft; 0.29 ac

Area of Temporary Disturbance in Greenway Setback:

3,078 sq ft; 0.07 ac

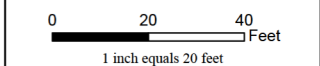
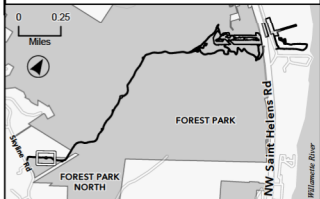
Area of Permanent Wetland Encroachment:

Wetland A (Forest Park): 1,074 sq ft; 0.02 ac

Wetland B (Forest Park): 1,854 sq ft; 0.04 ac

NOTES:

1. Root protection zones for single-stem trees are calculated by DBH x 1-ft. Therefore, a 6-in DBH tree has a root protection zone of 6-ft in diameter. For multi-stemmed trees, see Mitigation Site Plan Details II, SHT. L325. Root protection zones are not shown for trees to be removed or dead trees.
2. Vine Maples and all trees with a DBH less than 6-in are not shown on these plans.
3. South of the Harborton Substation, only trees with RPZs which overlap with the Limits of Disturbance are shown on these plans; all surveyed trees are included in the Project Site area.
4. See Construction Management Plan set for tree protection fencing.
5. Tax lots which intersect the Limits of Disturbance are labeled with the Tax Lot ID # and acreage.



MATCHLINE SEE SHEET L121

MATCHLINE SEE SHEET L123





Legend

- Limits of Disturbance
- Surveyed Tree Location
- Deciduous Tree (Living) to Be Protected
- Deciduous Tree (Dead) to Be Protected
- Deciduous Tree (Living) to Be Removed
- Deciduous Tree (Dead) to Be Removed
- Conifer (Living) to Be Protected
- Conifer (Dead) to Be Protected
- Conifer (Living) to Be Removed
- Conifer (Dead) to Be Removed
- Root Protection Zone
- Existing Access Road Centerline
- Proposed Temporary Access Road
- Proposed Temporary Logging Haul Route
- Proposed Temporary Circulation Route
- Edge of Roadway/Access Road (approximate)
- Trail
- Cut Area
- Fill Area
- Wetland/Ordinary High Water (OHW)
- Drainage Reserve Area
- Drainage Flow Arrow
- Culvert
- 100-year Floodplain
- Multnomah County Tax Lot
- Zoning (City of Portland)
- Environmental Transition Zone
- Forest Park Boundary
- Powerline Easement
- Contour (5-foot intervals, vertical datum NAVD88)

Zoning (City of Portland):

- RF = Farm and Forest
- IH = Heavy Industrial
- OS = Open Space
- c = Environmental Conservation
- d = Design
- g = River General
- i = River Industrial
- k = Prime Industrial
- p = Environmental Protection
- q = Water Quality Resource Area
- s = Scenic Resource

Area of Temporary Wetland Encroachment:

Wetland F (Harborton S/S): 12,528 sq ft; 0.29 ac

Area of Temporary Disturbance in Greenway Setback: 3,078 sq ft; 0.07 ac

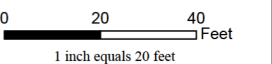
Area of Permanent Wetland Encroachment:

Wetland A (Forest Park): 1,074 sq ft; 0.02 ac

Wetland B (Forest Park): 1,854 sq ft; 0.04 ac

NOTES:

1. Root protection zones for single-stem trees are calculated by DBH x 1-ft. Therefore, a 6-in DBH tree has a root protection zone of 6-ft in diameter. For multi-stemmed trees, see Mitigation Site Plan Details II, SHT. L325. Root protection zones are not shown for trees to be removed or dead trees.
2. Vine Maples and all trees with a DBH less than 6-in are not shown on these plans.
3. South of the Harborton Substation, only trees with RPZs which overlap with the Limits of Disturbance are shown on these plans; all surveyed trees are included in the Project Site area.
4. See Construction Management Plan set for tree protection fencing.
5. Tax lots which intersect the Limits of Disturbance are labeled with the Tax Lot ID # and acreage.



MATCHLINE SEE SHEET L122



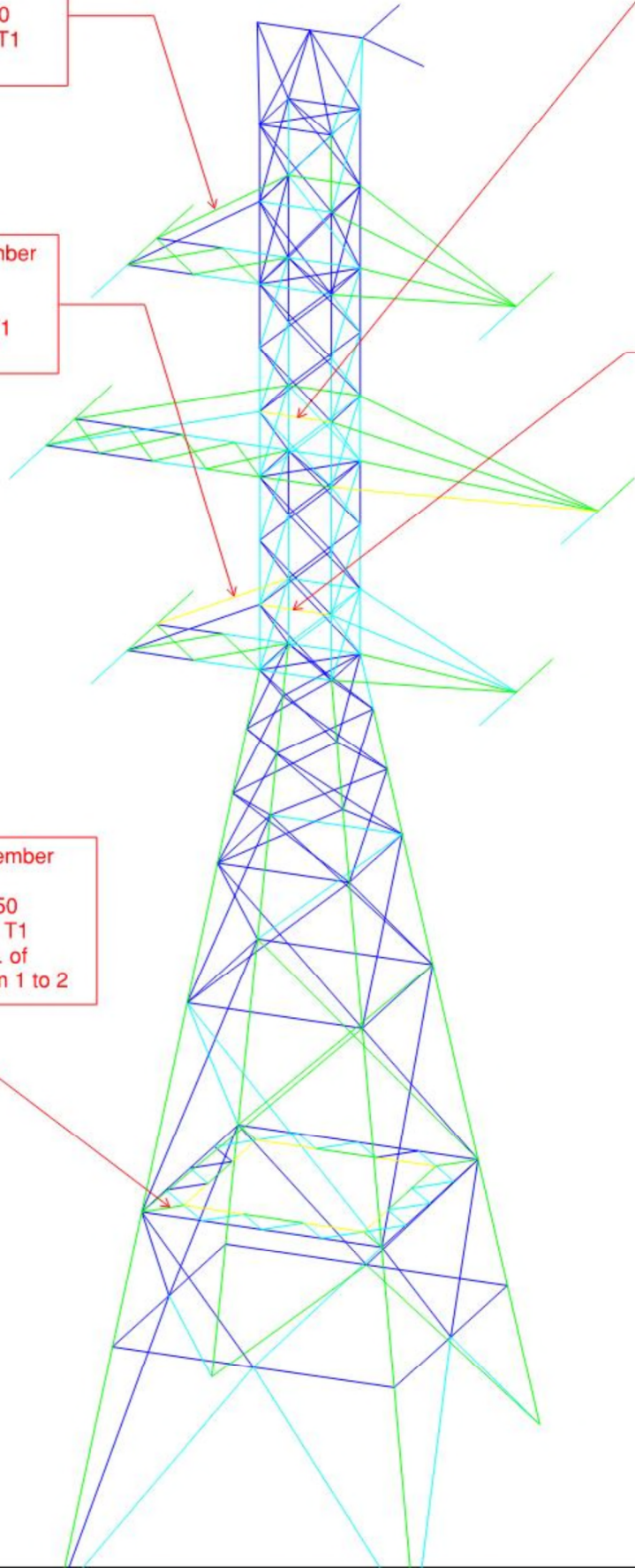
Replace original member
L3.5x2.5x0.25 with
L3.5x3.5x0.25 GR.50
Use new 3/4" A394 T1
Bolts

Replace original member
L3x2.5x0.25 with
L3x3x0.25 GR.50
Use new 3/4" A394 T1
Bolts

Replace original member
L3x3x0.1875 with
L3x3x0.3125 GR.50
Use new 3/4" A394 T1
Bolts

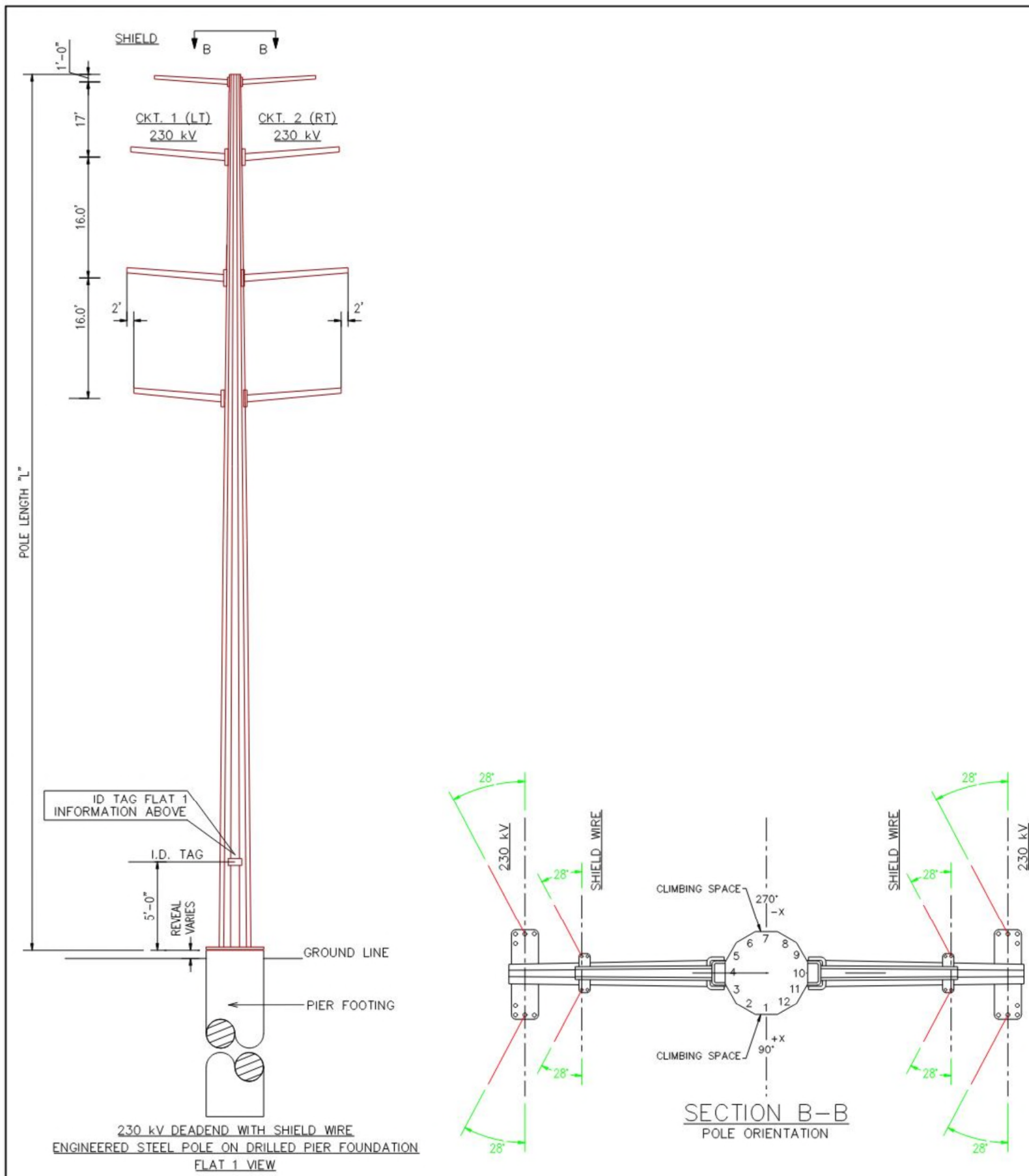
Replace original member
L2.5x2.5x0.1875 with
L3x3x0.25 GR.50
Use new 3/4" A394 T1
Bolts

Replace original member
L2x1.5x0.125 with
L2.5x2.5x0.25 GR.50
Use new 3/4" A394 T1
Bolts. Increase nos. of
connecting bolt from 1 to 2



% Usage Legend

Blue	0 <= % < 25
Cyan	25 <= % < 50
Green	50 <= % < 75
Yellow	75 <= % < 100
Red	100 <= %



REV	DATE	DESCRIPTION	DRN	DSGN	CKD
PGE STRUCTURE DESIGN SPECIFICATIONS					
DATE:		SCALE: NTS	DRAWING NO. STR-10717	JOB NO. M3405996	
	TITLE DEADEND 56-DEG LT, DOUBLE CIRCUIT, 230 kV, SHIELDED				
	CIRCUIT				SIZE 11x17
	LOCATION VARIOUS				
	COUNTY VARIOUS	SECTION(S) VARIOUS			
ENGINEERING SUPERVISOR					SHEET 1 OF 1
TRANSMISSION ENGINEERING & SPECIALIZED DESIGN 3700 SE 17TH AVE PORTLAND, OR 97202		ENGINEER	PHONE	DRAWN BY	
© PORTLAND GENERAL ELECTRIC CO. - ALL RIGHTS RESERVED					